

# ÍNDICE

<b>SISTEMA ALIMENTACIÓN Y FILTRACIÓN</b>	<b>PÁG</b>
CONECTORES COMBUSTIBLE	330
FILTROS DE COMBUSTIBLE	331
CARBURADOR	358
JUNTAS ADMISIÓN	357
MEMBRANAS BOMBA COMBUSTIBLE	358
JUNTAS BOMBA COMBUSTIBLE	359
<b>SISTEMA ELÉCTRICO</b>	<b>PÁG</b>
MOTORES DE ARRANQUE	334
MOTORES DE TRIM Y POWER TRIM	335
<b>SISTEMA DE ENCENDIDO</b>	<b>PÁG</b>
BOBINAS	334
BUJIAS CHAMPION	336
BUJIAS NGK	336
<b>SISTEMA DE REFRIGERACIÓN</b>	<b>PÁG</b>
IMPULSORES	359
PLACA BOMBA DE AGUA	359
JUNTAS DE COLA	359
TERMOSTATO	359
<b>PARTES DE MOTOR</b>	<b>PÁG</b>
DESPIECE DE MOTOR	337
DESPIECE MOTOR MFS8 / MFS9.8 HP	342
PISTONES, AROS Y RODAMIENTOS	354
JUNTAS BASE DE MOTOR	356
JUNTAS DE CULATA	355
JUNTAS ESCAPE	357
<b>COLAS Y COMPONENTES</b>	<b>PÁG</b>
ÁNODOS ZINC Y ALUMINIO	333
RETENES ACEITE	357
HÉLICES Y GUIA DE APLICACIÓN	361
FILTROS ACEITE	333
JUNTAS BOMBA AGUA	359
GUÍA PIEZAS COLA	360
<b>GUÍA DE MANTENIMIENTO</b>	<b>360</b>

## TABLE OF CONTENTS

<b>FUEL &amp; FILTRATION SYSTEM</b>	<b>PAGE</b>
FUEL FITTINGS	330
FUEL FILTERS	331
CARBURETOR	358
ADMISION GASKET	357
FUEL PUMP DIAPHRAGMS	358
FUEL PUMP GASKETS	359
<b>ELECTRIC SYSTEM</b>	<b>PAGE</b>
STARTERS	334
TRIM & POWER TRIM	335
<b>IGNITION SYSTEM</b>	<b>PAGE</b>
COILS	334
CHAMPION SPARK PLUGS	336
NGK SPARK PLUGS	336
<b>COOLING SYSTEM</b>	<b>PAGE</b>
IMPELLERS	359
PLATE WATER PUMP	359
DRIVE GASKET	359
THERMOSTAT	359
<b>ENGINE PARTS</b>	<b>PAGE</b>
ENGINE PARTS	337
MFS8 / MFS9.8 HP ENGINE PARTS	342
PISTONS, RINGS AND BEARINGS	354
GASKET ENGINE HOLDER	356
GASKETS CYLINDER HEAD	355
EXHAUST GASKET	357
<b>UNIT DRIVES &amp; COMPONENTS</b>	<b>PAGE</b>
ZINC & ALUMINIUM ANODES	333
OIL SEALS	357
PROPELLERS & APLICATION GUIDE	361
OIL FILTER	333
WATER PUMP GASKET	359
GEAR COMPONENTS	360
<b>MANITENANCE GUIDE</b>	<b>360</b>

## INDICE

<b>SISTEMA DI ALIMENTAZIONE E FILTRAZIONE</b>	<b>PAGINA</b>
ATTACCO BENZINA	330
FILTRI BENZINA	331
CARBURATORE	358
GUANIZIONE ASPIRAZIONE	357
MEMBRANA POMPA BENZINA	358
GUARNIZIONE POMPA BENZINA	359
<b>SISTEMA ELECTRICO</b>	<b>PAGINA</b>
MOTORINI AVVIAMENTO	334
MOTORINI TRIM E TRIM POWER	335
<b>SISTEMA DI ACCENSIONE</b>	<b>PAGINA</b>
BOBINE	334
CANDELE CHAMPION	336
CANDELE NGK	336
<b>SISTEMA DI RAFFREDDAMENTO</b>	<b>PAGINA</b>
GIRANTE	359
PIASTRA POMPA ACQUA	359
GUARNIZIONI PIEDI	359
THERMOSTATO	359
<b>PARTI DEL MOTORE</b>	<b>PAGINA</b>
PARTI DEL MOTORE	337
PARTI MOTORE MFS8 / MFS9.8 HP	342
PISTONE, FASCE E CUSCINETTI	354
GUARNIZIONI BASE MOTORI	356
GUARNIZIONE TESTATA	355
GUANIZIONE SCARICO	357
<b>PIEDI E COMPONENTI</b>	<b>PAGINA</b>
ANODI ZINCO E ALLUMINIO	333
PARAOLIO	357
ELICHE E GUIDA APPLICAZIONE	361
FILTRI OLIO	333
GUARNIZIONE POMPA ACQUA	359
COMPONENTE TRASMISSIONE	360
<b>GUIDA DI MANUTENZIONE</b>	<b>360</b>

# CONECTORES COMBUSTIBLE FUEL FITTINGS ATTACCHI BENZINA

## BOMBA DE COMBUSTIBLE PRIMER BULB POMPA BENZINA

Ref.	Manguera Hose Tubo	Envase Pack Qnt
GS31090	5/16"	1 x blister
GS31095	3/8"	1 x blister
GS31187	1/4"	1 x blister
CEF500621	8 mm	1 x bolsa / bag / borsa



Universal / Universale  
GS31090 - GS31095- GS31187

Fabricada con elastómeros termoplásticos inyectados, resistentes al alcohol y rayos UV.

Premium quality bulb resistance to alcohol as well as UV and ozone.  
Fabbricata con elastomero termoplastico, resistente ai solventi e ai raggi UV.



CEF500621

## LÍNEA DE COMBUSTIBLE FUEL LINE ASSEMBLY TUBO CARBURANTE

Ref. OEM	R.O.	Manguera Hose Tubo	Envase (x bolsa) Pack (x bag) Qnt (x borsa)
GS31096		5/16"	1
GS31097		3/8"	1
GS31099		8 mm	1
SIE18-8013		5/16"	1
SIE18-8015		3/8"	1
CEF500600		8 mm	1

Universal. Con 2 m de manguera resistente al alcohol.

Universal. With 2 m alcohol resistant hose.

Universale con 2 m di tubo resistente ai solventi.

**GOLDENSHIP**



GS31096 - GS31097



**GOLDENSHIP**

GS31099



SIE18-8013, SIE18-8015



CEF500600

Ref. OEM	R.O.	Manguera Hose Tubo	Envase (x bolsa) Pack (x bag) Qnt (x borsa)
GS31189		3/8"	1

**GOLDENSHIP**



Bomba GS31188.

Con 2 m de manguera resistente al alcohol.

Primer GS31188. With 2 m alcohol resistant hose.

Pompa GS31188 con 2 m di tubo resistente ai solventi.

## MANGUERA DE COMBUSTIBLE FUEL HOSE TUBO BENZINA

Ref.	Ø Int	Largo Lengh Long	Envase Pack Qn
TRI305-0566	5/16" = 7,92 mm.	15 m	Caja / Box / Cassa
TRI305-0386	3/8" = 9,53 mm.	15 m.	Caja / Box / Cassa



TRIDENT



Manguera «Trident» para líneas de combustible. Con refuerzo termoplástico que le permite excelente flexibilidad y resistencia a los rayos UV. Color gris. Resistente al alcohol. **Especialmente indicado para motores fueraborda.** Cumple las normas: SAEJ1527, ISO-8469 Tipo B1 y Certificación CE. Garantía: 3 años

Marine fuel hose (distribution and vent) **for outboards.** Fuel resistant thermoplastic formulation with 2 spiral reinforcement provides excelent bendability and resistance to UV, aging and permeation by all marine fuels (gasoline/petrol and diesel) including alcohol blends. Meets or exceeds: SAEJ1527, ISO-8469 Tipo B1 & Certification CE. Warranty: 3 years

Tubo «Trident» per linea combustibile. Con rinforzo termoplastico che gli permette un'eccellente flessibilità e resistenza ai raggi UV. Colore grigio. Resistente ai solventi. **Indicato per i motori fuoribordo.** Conforme alla norma: SAEJ1527, ISO-8469 Tipo B1 e Certificazione CE. Garanzia: 3 anni

## CONECTORES CONNECTOR ATTACCO

Ref.	Rosca Thread Passo	Envase (x blister) Pack (x skinpack) Qnt (x Blister)
GS31069	1/4" NPT	1

**CONECTOR "T"**

Para conectar dos motores a un sólo depósito, o viceversa. Fabricado en latón.

**CONNECTOR "T"**

To connect two motors to a single deposit, or vice versa. Made in machined brass.

**CONNETTORE "T"**

Per collegare due motori ad un solo serbatoio, o viceversa. Fabbriato in ottone.

**GOLDENSHIP**



Ref.	Rosca Thread Passo	Envase (x blister) Pack (x skinpack) Qnt (x Blister)
GS31068	1/4" NPT	1

**CODO DEPOSITO**

Fabricado en latón.

**TANK ELBOW**

Made in machined brass.

**GOMITO SERBATOIO**

Fabbriato in ottone.

**GOLDENSHIP**



## PASAMAMPAROS THRU HULL PASSASCAFO

Ref.	R.O. OEM	Manguera Hose Tubo	Envase (x blister) Pack (x blister) Qnt (x blister)
GS31064		3/8"	1

**GOLDENSHIP**



Para atravesar mamparos de hasta 12mm. Fabricado en latón.  
For bulkhead up to 12 mm. Made in machined brass.  
Per attraversare paratie fino a 12mm. Fabricato in ottone.

## TOMA TANQUE COMBUSTIBLE FUEL TANKS CONNECTOR FILETTATURA PER SERBATOIO BENZINA

Ref.	Rosca Thread Passo	Envase (x blister) Pack (x skinpack) Qnt (x Blister)
GS31073	1/4" NPT	1
GS31020	1/4" NPT Vertical / Vertical / Verticale	1

Fabricado en latón.  
Made in machined brass.  
Fabricato in ottone.



**GOLDENSHIP**



GS31073

GS31020

## FILTROS COMBUSTIBLE Y ELEMENTOS FUEL FILTERS & ELEMENTS SUPPORTI, FILTRI BENZINA E RACCORDI

### BRACKET / BRACKET / SUPPORTO

Ref.	Bracket Bracket Supporto	Tomas NPTF Ports Filetto
REC25000	Aluminio / Aluminium / Alluminio	1/4"
REC25010	INOX AISI316 / S.S. AISI316	1/4"
REC25020	Aluminio / Aluminium / Alluminio	3/8"
REC25030	INOX AISI316 / S.S. AISI316	3/8"
RECOBBRACKET	Plástico / Plastic / Plastica	1/4"

Con 2 tapones de bronce y 2 tubos de extensión.  
(2 entradas y 2 salidas).  
With 2 brass plugs and 2 extension tubes.  
(2 inputs & 2 outputs).  
Con 2 tappi di bronzo e 2 tubi di estensione.  
(2 ingressi entrata carburante e 2 uscite carburante).



REC25000 - REC25020

REC25010 - REC25030

RECOBBRACKET

## FILTRO COMBUSTIBLE SEPARADOR DE AGUA WATER SEPARATING FUEL FILTER FILTRO SEPARATORE ACQUA-BENZINA

FILTRO ORIGINAL  
OEM FILTER  
FILTRO BENZINA ORIGINALE

Ref.	Micras Micron Micron	Altura Height Altezza
RM35-802893Q	10	3-3/4"



Ref.	Micras Micron Micron	Altura Height Altezza
REC24942	10	4-7/16"
REC35-802893Q01	10	3-3/4"
REC855686	28	4-7/16"
REC35-802893Q	25	3-3/4"
RACPPFF5510	10	4-7/16"

**RECMAR**



REC24942

REC35-802893Q

REC35-802893Q01

REC855686

**RACOR**



RACPPFF5510

## FILTRO CON BRACKET OEM FILTER WITH BRACKET FILTRO BENZINA CON SUPPORTO

Ref.	Micras Micron Micron	Tomas NPTF Ports Filetto	Flujo Flow Flusso
REC24950	25	1/4"	50 GPH
REC24952	10	1/4"	50 GPH

Bracket de Aluminio. Con 2 tapones de bronce y 1 tubo de extensión.  
Cast Aluminium Bracket. With 2 brass plugs & 1 extension tube.  
Supporto in alluminio. Con 2 tappi di bronzo e 1 tubo di estensione.



Ref.	Micras Micron Micron	Tomas NPTF Ports Filetto	Flujo Flow Flusso
REC24960	28	1/4"	50 GPH
REC24956	28	1/4"	50 GPH

Bracket Inox. AISI316. Con 2 tapones de bronce y 2 tubos de extensión.  
With S.S. AISI316 Bracket. With 2 brass plugs & 2 extension tubes.  
Supporto Inox AISI316. Con 2 tappi di bronzo e 2 tubi di estensione.



REC24960  
Bracket rojo  
Red Bracket  
Supporto rosso



REC24956

## FILTRO DECANTADOR CON VASO TRANSPARENTE COMPLETE FUEL FILTER WITH TRANSPARENT BOWL FILTRO DI DECANTAZIONE CON VASCHETTA TRASPARENTE

Ref.	Elemento Element Cartuccia	Bracket
RAC320R-RAC-01	RACS3213	Aluminio / Aluminium / Alluminio
RAC320R-RAC-03		Plástico / Plastic / Plastica



Incluye soporte  
Includes bracket.  
Con supporto

**RACOR**

TOHATSU

RECAMBIOS  
MARINOS S.L.

Filtro completo Complet filter Filtro completo	Cartucho recambio Replacement element Cartuccia di ricambio	Capacidad Máx. Max. Capacity Capacità massima
REC90794-46866	REC90794-46868	117l/h



**RECMAR®**

**LLAVE PARA FILTRO  
FILTER KEY  
CHIAVE DA FILTRO**

Ref.
RECY5-225-15



Filtro completo Complet filter Filtro completo	Micras Micron Micron	Rosca Thread Filettatura	Capacidad Máx. Max. Capacity Capacità massima
RAC490R-RAC-01	10	3/8" NPTF	340 l/h

**RACOR®**



**CON PURGADOR.** Para motores fueraborda superiores a 150 HP.  
**WITH PRIMING PUMP.** For outboards engines more than 150 HP.  
**CON POMPETTA PER RIEMPIRE IL FILTRO.** Per motori fuoribordo superiori a 150HP

**ELEMENTO DE RECAMBIO  
FILTER ELEMENT  
CARTUCCIA DI RICAMBIO**

Ref.	R.O. / OEM
RACS3227	YMM-2E227-00 YMM-2E227-01



Filtro completo Complet filter Filtro completo	Cartucho recambio Replacement element Cartuccia di ricambio	Capacidad Máx. Max. Capacity Capacità massima
RECOFILTER	RECOBELEMENT	150 l/h

**RECMAR®**



**RACORS  
RACORS  
RACCORDO**

Ref.	Rosca Thread Passo	Manguera Hose Tubo	Envase (x blister) Pack (x skinpack) Qnt (x blister)
GS31066	1/4" NPT	5/16" = 7.9 mm	2
GS31067	1/4" NPT	3/8" = 9.5 mm	2

Fabricado en latón.  
Made in machined brass.  
Prodotto in ottone

**GOLDENSHIP**



Ref.	Rosca Thread Passo	Manguera Hose Tubo	Envase (x blister) Pack (x skinpack) Qnt (x blister)
GS31065	1/4" NPT	3/8" = 9.5 mm	2
GS31166	1/4" NPT	5/16" = 7.9 mm	2
GS31155	3/8" NPT	3/8" = 9.5 mm	2
GS31156	3/8" NPT	5/16" = 7.9 mm	2
GS31157	3/8" NPT	1/4" = 6.4 mm	2

Racor 90° fabricado en latón.  
Made in machined brass.  
Raccordo 90° prodotto in ottone

**GOLDENSHIP**



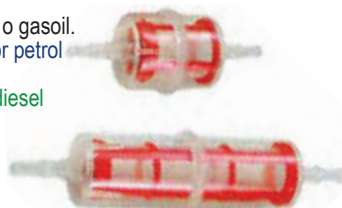
**FILTRO COMBUSTIBLE EN LÍNEA  
INLINE FUEL FILTER  
FILTRO COMBUSTIBILE IN LINEA**

Ref.	Capacidad Capacity Capacità	Manguera Hose Tubo	Envase (x blister) Pack (x skinpack) Qnt (x blister)
GS31001	50 lt/h	6-8 mm	1 x skinpack
GS31002	150 lt/h	8-10 mm	1 x skinpack

Filtro transparente para gasolina o gasoil.  
Transparent plastic in line filter for petrol and diesel.

Filtro trasparente per benzina o diesel

**GOLDENSHIP**



Ref.	R.O.
REC35-80365M	646-24251-02

**MOTORES / ENGINES / MOTORI**

6	(1989, 1992-99)
8	(1989-99, 2001-02)
F4	(1999-02)
F9.9	(1989-95, 1997-99, 2001-02)
FT 9.9	(1988-90)

Ref.	Ø Manguera / Ø Hose / Ø Tubo
REC40145	1/4"
REC40155	5/16"
REC40165	3/8"
REC40135	5/16" Entrada In Entrata 3/8" Salida Out Uscita

De plástico / Plastic / In plastica

Ref.	R.O.
PAF4-05000300	369-02230-0

**MOTORES / ENGINES / MOTORI**

2T / Strokes	M5-M9.8HP
4T / Strokes	MFS4 - MFS30 HP



**CONECTOR COMBUSTIBLE  
FUEL CONNECTOR  
ATTACCO COMBUSTIBILE**

Ref.	R.O. OEM	Rosca Thread Passo	Tiempos Strokes Tempi	Envase (x blister) Pack (x skinpack) Qnt (x Blister)
GS31088	3B2-702501M	3/8"	2 (5 - 90HP)	1
GS31016	3B2-702810M	3/8"	2 (5 - 90HP)	1
GS31019	99998-OMA2	1/4" NPT	2 / 4	1
GS31015	394-702500M	3/8"	4	1
GS31017		1/4" NPT	2 (5 - 90HP)	1
GS31018	3B2-702601M	métrica	2 (5 - 90HP)	1

MADE IN THE USA

**GOLDENSHIP**



GS31088



GS31016



## FILTROS ACEITE OIL FILTERS FILTRI OLIO

Ref.	R.O.
REC5GH-13440-00	3R3R76150M, 3R0-07615-0

MOTORES / ENGINES / MOTORI  
4T / Strokes 9.9 - 30 HP



## ÁNODOS ANODES ANODI

Ref.	R.O.	Peso Weight Peso
CM3C760-2181	3C7760-2181	Cinc / Zinc / Zinco 0,51 kg
CM3C760-2181A	3C7760-2181	Aluminio / Aluminium / Alluminio 0,21 kg

MOTORES / ENGINES / MOTORI  
60, 70, 90, 120, 140 HP



Ref.	R.O.	Peso Weight Peso
CM3B7-60218-0	3B7-60218-1	Cinc / Zinc / Zinco 0,51 kg

MOTORES / ENGINES / MOTORI  
Serie MEGA



Ref.	R.O.	Peso Weight Peso
CM5338602182A0	5338602182A0	Cinc / Zinc / Zinco 0,21 kg
CM5338602182A0A	5338602182A0	Aluminio / Aluminium / Alluminio 0,08 kg



Ref.	R.O.	Peso Weight Peso
CM3H6-60218-000	3H6-60218-0	Cinc / Zinc / Zinco 0,03 kg
CM3H6-60218-000A	3H6-60218-0	Aluminio / Aluminium / Alluminio 0,01 kg



Ref.	R.O.	Peso Weight Peso
CM3V1-60217-0	3V1602170	Cinc / Zinc / Zinco 0,10 kg
CM3V1-60217-0A	3V1602170	Aluminio / Aluminium / Alluminio 0,04 kg



Ref.	R.O.	Peso Weight Peso
CM3M2-60218-1	3M2-60218-0	Cinc / Zinc / Zinco 0,05 kg

MOTORES / ENGINES / MOTORI  
40, 140 HP



Ref.	R.O.	Peso Weight Peso
CM33860-2181	338-60218-2	Cinc / Zinc / Zinco 0,10 kg

MOTORES / ENGINES / MOTORI  
2.5, 3.5, 5, 6, 8 HP  
15, 18, -S MAXI 25, 40 CORSA



Ref.	R.O.	Peso Weight Peso
CM348-60217-0M	348-60217-0	Cinc / Zinc / Zinco 0,12 kg

MOTORES / ENGINES / MOTORI  
Serie MAXI CORSA  
25-40 HP



Ref.	R.O.	Peso Weight Peso
CM3C8-60217-0	3C8-60217-1	Cinc / Zinc / Zinco 0,15 kg

MOTORES / ENGINES / MOTORI  
Serie MEGA  
25-50 HP



Ref.	R.O.	Peso Weight Peso
CM3B7-602170	3B7-60217-0	Cinc / Zinc / Zinco 0,15 kg

MOTORES / ENGINES / MOTORI  
60, 70, 90, 120, 140 HP



Ref.	R.O.	Peso Weight Peso
TEN01252	348-60217-0	Cinc / Zinc / Zinco 0,120 kg

MOTORES / ENGINES / MOTORI  
Serie MAXI CORSA 25 - 40 HP



Ref.	R.O.	Peso Weight Peso
TEN01250	338-60218-2 Ø 20 mm	0,010 kg
TEN01251	369-60218-1 Ø 24 mm	0,020 kg

**MOTORES / ENGINES / MOTORI**

Serie 2.5, 3.5, 5, 6, 8 HP  
15 - 18-S MAXI-25 - 40 CORSA



Ref.	R.O.	Peso Weight Peso
TEN01253	3C8-60217-1 Cinc / Zinc / Zinco	0,150 kg

**MOTORES / ENGINES / MOTORI**

Serie MEGA 25 - 50 HP



Ref.	R.O.	Peso Weight Peso
TEN01254	3C7-60218-2 Cinc / Zinc / Zinco	0,510 kg

**MOTORES / ENGINES / MOTORI**

Serie 60 - 70 - 90 - 120 - 140 - 150 HP



Ref.	R.O.	Peso Weight Peso
TEN01255	3B7-60217-0 Cinc / Zinc / Zinco	0,320 kg

**MOTORES / ENGINES / MOTORI**

Serie 60 - 70 - 90 - 120 - 140 HP



Ref.	R.O.	Peso Weight Peso
TEN01256	3B7-60218-1 Cinc / Zinc / Zinco	0,040 kg

**MOTORES / ENGINES / MOTORI**

Serie MEGA



Ref.	R.O.	Peso Weight Peso
TEN01257	3M2-60218-0 Cinc / Zinc / Zinco	0,050 kg

**MOTORES / ENGINES / MOTORI**

Serie 40 - 140 HP



Ref.	R.O.	Peso Weight Peso
TEN01258	5338602182A0 Cinc / Zinc / Zinco	0,020 kg

**MOTORES / ENGINES / MOTORI**



Ref.	R.O.	Peso Weight Peso
TEN01259	3H6-60218-0 Cinc / Zinc / Zinco	0,030 kg



Ref.	R.O.	Peso Weight Peso
TEN01260	3B7-60217-0 Cinc / Zinc / Zinco	0,150 kg

**MOTORES / ENGINES / MOTORI**

Serie 140 HP



**MOTORES DE ARRANQUE  
STARTERS  
MOTORINI AVVIAMENTO**

Ref.	R.O.	Tiempos / Strokes / Tempi
PH130-0061	350-76010-0	2 / 4

**MOTORES / ENGINES / MOTORI**

M15D2 / M18E2 / M8B / M9.8B / M9.9D2  
MFS8A2 / MFS9.8A2



Ref.	R.O.	Tiempos / Strokes / Tempi
PH130-0006	3C8-76010-1	2 / 4

**MOTORES / ENGINES / MOTORI**

M40D2 / MD40B2 / M50D2 / MD50B2 / M70C  
MFS9.9B2-C / 15B2-C / 18B2 / 20C / 25A-B / 30B



Ref.	R.O.	Tiempos / Strokes / Tempi
PH130-0048	353-76010-4	

**MOTORES / ENGINES / MOTORI**

MD70B - 90B - 115A-A2 / 120A2 / 140A2  
9 Dientes / Tooth / Denti



Ref.	R.O.	Tiempos / Strokes / Tempi
PH130-0080	346-76010-0, 346-76010-0A0/-OM	2

**MOTORES / ENGINES / MOTORI**

M25C3 / M30A4 / M40C



## MOTORES TRIM TRIM ENGINES MOTORINI TRIM

Ref. R.O.  
PH200-T024

MOTORES / ENGINES / MOTORI

V4, V6 (1990-03)  
Motor trim 3 tornillos - 2 cables  
Trim motor 3 bolts - 2 wires  
Motorino Trim 3 viti - 2 cavi



## TRIM COMPLETO COMPLETE TRIM ASSEMBLY MOTORINO TRIM COMPLETO

Ref. R.O.  
REC18-6865

MOTORES / ENGINES / MOTORI

3 RAM  
115-225HP



## INSTALACIÓN ELÉCTRICA WIRING HARNESS ISTALLAZIONE ELETTRICA

Ref. R.O.  
PH200-WH01

Sustituye de 2 a 3 cables.  
Converts 3-wire Tilt and Trim motors to 2-Wire design  
Sustituisce da 2 a 3 cavi.



## CDI

Ref. R.O.  
REC3F0-06060-0 3F0-06060-0

MOTORES / ENGINES / MOTORI

M2.5A2  
B3.5A2-B2



Ref. R.O.  
REC3G2-06060-2 3G2-06060-2

MOTORES / ENGINES / MOTORI

M9.9D2  
B15D2  
M18E2



Ref. R.O.  
PAF8-05000400 3AA-06060-00

MOTORES / ENGINES / MOTORI

MFS8  
BFS9.8



Ref. R.O.  
REC353-06260-0 353-06260-2, 353-06260-0

MOTORES / ENGINES / MOTORI

45A2  
55B  
60A  
75A2



Ref. R.O.  
REC3A106-2602M 3A106-2402M, 3A106-2601M  
3A106-2602M

MOTORES / ENGINES / MOTORI

25C2  
30A3  
40C



## BOBINAS COILS BOBINE

Ref. R.O.  
PAF8-05000500 3V1-06040-0

MOTORES / ENGINES / MOTORI

MFS8 / MFS9.8 HP

Alta presión  
Hight pressure  
Alta pressione



Ref. R.O.  
PAF8-05000300 3AA-06021-0

MOTORES / ENGINES / MOTORI

MFS8 / MFS9.8 HP



Ref. R.O.  
REC3G3-06021-1 3G3-06021-1

MOTORES / ENGINES / MOTORI

M9.9D2 / M15D2 / M18E2  
M25C3 / M30A4



Ref. R.O.  
REC369-06021-0 369-06021-0

MOTORES / ENGINES / MOTORI

M4C  
M5B-BS



## BOBINA DE PULSACIÓN COIL PULSER BOBINE ACCENSIONE

Ref. R.O.  
PAF8-05000200 3V1-06071-0

MOTORES / ENGINES / MOTORI

MFS8 / MFS9.8 HP





## BOBINA DE IGNICIÓN COIL IGNITION BOBINE INIEZIONE

Ref. R.O.  
REC3A0-06040-1 3A0-06040-1

MOTORES / ENGINES / MOTORI

M25C3  
M30A4

Ref. R.O.  
REC3G2-06040-2 3G2-06040-2

MOTORES / ENGINES / MOTORI

M9.9D2  
M15D2  
M18E2



## BOBINA DE CARGA COIL CHARGER BOBINE DI CARICA

Ref. R.O.  
PAF8-05090000W 3V1-06023-0

MOTORES / ENGINES / MOTORI

MFS8 / MFS9.8 HP



## SENSOR PRESIÓN ACEITE OIL PRESSURE SENSOR SENSORE PRESSIONE OLIO

Ref. R.O.  
PAF15-07010100 3HG-07611-0

MOTORES / ENGINES / MOTORI

MFS4 - MFS40 HP



## BUJÍAS CHAMPION SPARK CHAMPION CANDELE CHAMPION

HP Ref CHAMPION

2 Tiempos / Stroke / Tempi

3.5HP M3.5A, M3.5B	CHAL87YCC
5HP M5B, M5BS	CHAL82YC
6HP M6B	CHAL82YC
8HP M8A, M8B 2Cil.	CHAL82YC
9.9HP M9.9B2, M9.9C 2Cil.	CHAL82C
9.8-12HP B18C, B18D	CHAL86C
12HP M12B	CHAL82C
15HP M15A, M15B2, M15C, M15D 2Cil.	CHAL82C
16HP M16	CHAL82C
18HP M18A, M18C2, M18D, M18E 2Cil.	CHAL82C
20HP M20	CHAL82C
20-25HP B40A, B30C	CHAL86C
25HP M25C, M25C2 2Cil.	CHAL82C
30HP M30A, M30A3 2Cil.	CHAL82C
35HP M35A	CHAL82YC
40HP M40C 2Cil., M40D 3Cil.	CHAL82YC
50HP M50C, M50D 3Cil.	CHAL78C
70HP M70A, M70A2, M70B 3Cil.	CHAL78C
90HP M90A 3Cil.	CHAL78C
115HP M115A 4Cil.	CHAL78C
140HP M140A 4Cil.	CHAL78C

4 Tiempos / Stroke / Tempi

4 HP MFS4, OHV	CHARA8HC
5 HP MFS5A, OHV	CHARA8HC
5 HP MFS5C, OHV	CHARA8HC
9.9 HP MFS9.9A, OHV	CHARA8HC
15 HP MFS15A, OHV	CHARA8HC

CHAMPION



## BUJÍAS NGK SPARK NGK CANDELE NGK



Potencia HP Power HP Potenza HP Ref NGK

2 Tiempos / Stroke / Tempi

2.5 HP M2.5A 75cc	NGKBPR6HS
3.5 HP M3.5A/M3.5B 75cc	NGKBPR6HS
4 HP M4C	NGKBPR7HS
5 HP B13B, B9B	NGKBR6HS
5 HP M5B, M5BS	NGKBPR7HS-10
6 HP M6B	NGKBPR7HS
8 HP M8A, M8B 169cc	NGKBPR5HS
8 HP Proof 8 BEF, 169cc	NGKBPR7HS
8 HP B13B, B9B	NGKBPR6HS
9.8 HP B18C, B18D	NGKBPR6HS
9.9 HP M9.9B2/M9.9C	NGKBPR7HS
12 HP M12B	NGKBPR7HS-10
12 HP B18C, B18D	NGKBPR6HS
13 HP M13	NGKBPR7HS-10
15 HP M15A/M15B2/M15C/M15D	NGKBPR7HS-10
16 HP M16	NGKBPR7HS-10
18 HP M18A/M18C2/M18D/M18E 294cc	NGKBPR7HS-10
20 HP M20	NGKBPR7HS-10
20 HP B40A, B30C	NGKBPR7HS-10
25 HP Proof 25C2 430cc	NGKBPR7HS-10
25 HP M25C, M25C2	NGKBPR7HS-10
25 HP B40A, B30C	NGKBPR7HS-10
30 HP M30A/M30A3 400cc	NGKBPR7HS-10
35 HP M35A	NGKBPR7HS
40 HP MD40B TLDI	NGKPZFR6H
40 HP M40D2 697cc	NGKBPR7HS
40 HP Proof 40D Mega 697cc	NGKB8HS-10
40 HP Proof 40D Mega 697cc EFTO	NGKB8HS-10
40 HP M40D Mega EPTO 697cc	NGKBR7HS
40 HP M40C 493cc	NGKBPR6HS-10
40 HP MD40A TLDI	NGKZFR6F-11
50 HP 697cc	NGKB8HS-10
50 HP MD50A TLDI	NGKZFR6F-11
50 HP MD50B TLDI	NGKPZFR6H
50 HP W50	NGKPZFR6H
50 HP M50C/M50D	NGKB8HS-10
55 HP M55A/B	NGKB8HS-10
60 HP 938cc M60A/M60B/M60C	NGKB8HS-10
70 HP MD70A 2 TLDI	NGKZFR6F-11
70 HP MD70B TLDI	NGKIZFR5J
70 HP 938cc M70A/M70A2/M70B	NGKB8HS-10
80 HP M80A	NGKB8HS-10
90 HP 1267cc M90A	NGKB8HS-10
90 HP MD90B TLDI	NGKIZFR5J
90 HP MD90A TLDI	NGKZFR6F-11
90 HP MD90A 2 TLDI	NGKZFR6F-11
115 HP MD115A TLDI	NGKIZFR5J
115 HP M115A/A2	NGKB8HS-10
120 HP 1768cc M120A	NGKB8HS-10
140 HP 1768cc M140A	NGKB8HS-10

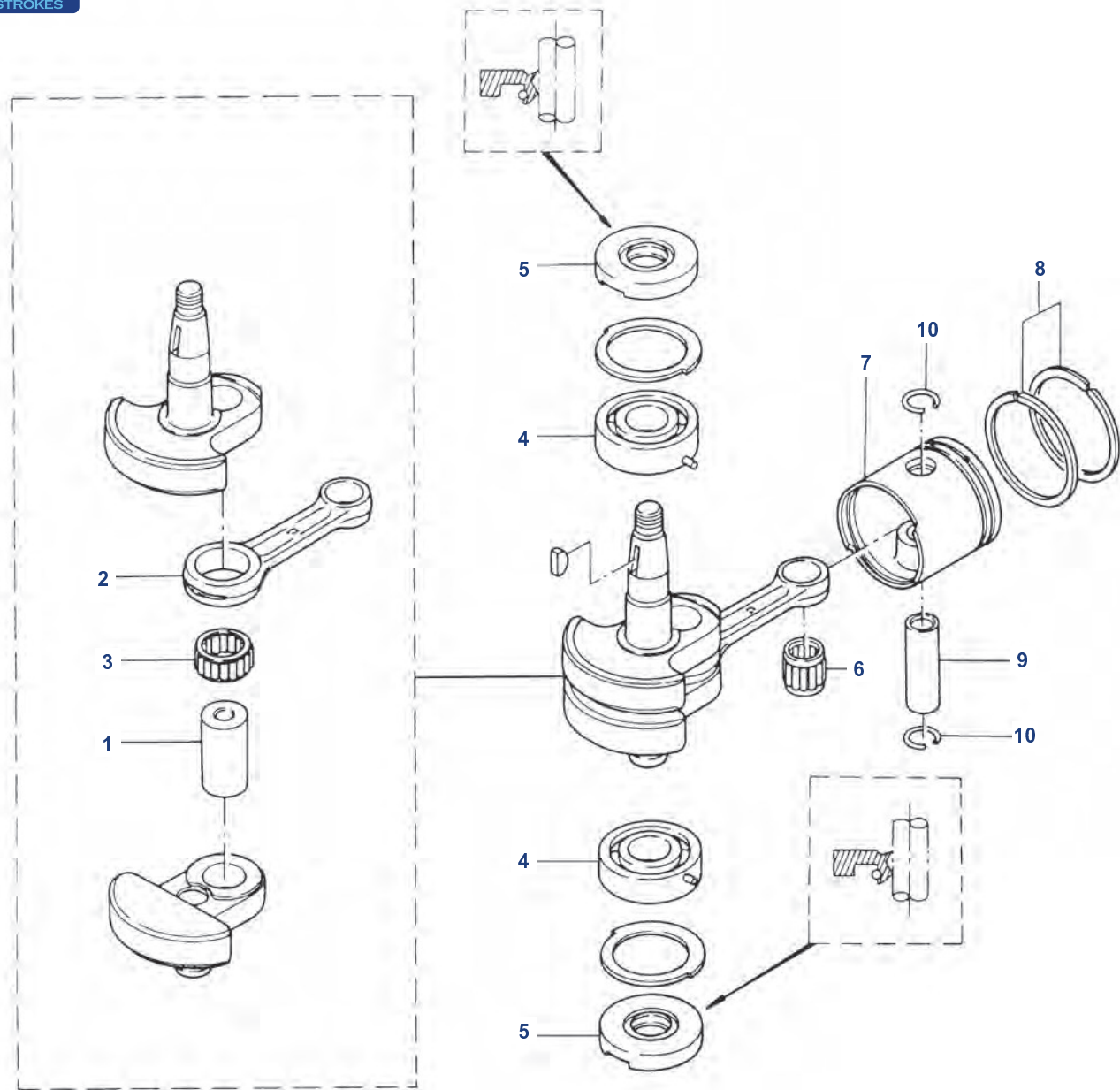
4 Tiempos / Stroke / Tempi

2.5 MFS 2.5A	NGKDCPR6E
3.5 MFS 3.5A	NGKDCPR6E
4 MFS 4A	NGKDCPR6E
5 MFS 5A	NGKDCPR6E
6 MFS 6A	NGKDCPR6E
8 MFS 8A	NGKDCPR6E
9.8 MFS 9.8A	NGKDCPR6E
9.9 MFS 9.9A/B	NGKDCPR6E
15 MFS 15A/B/B2	NGKDCPR6E
18 MFS 18B4/18B	NGKDCPR6E
25 MFS 25A	NGKDCPR6E
30 MFS 30A	NGKDCPR6E

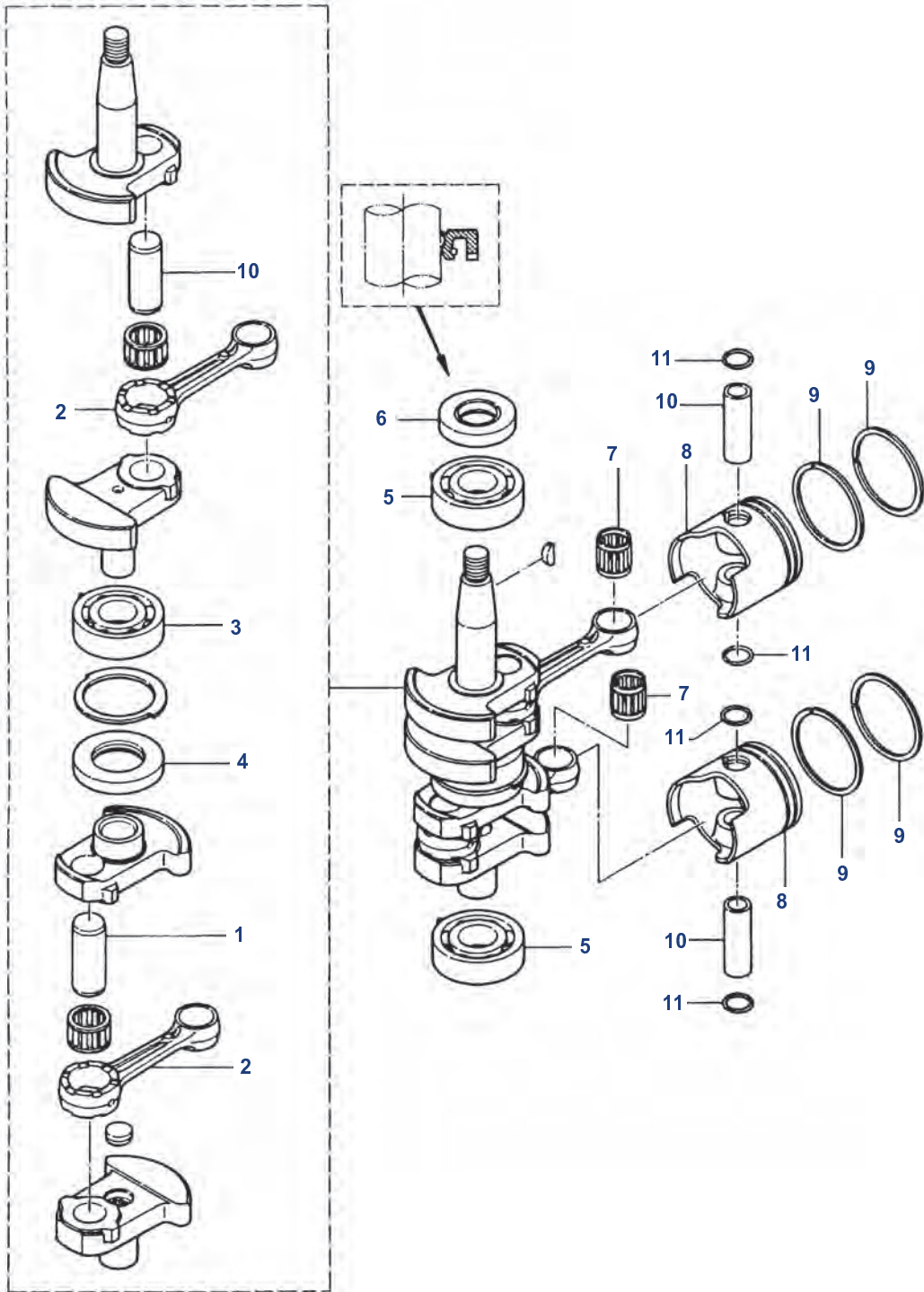
# BLOQUE MOTOR ENGINE BLOCK BLOCCO MOTORE



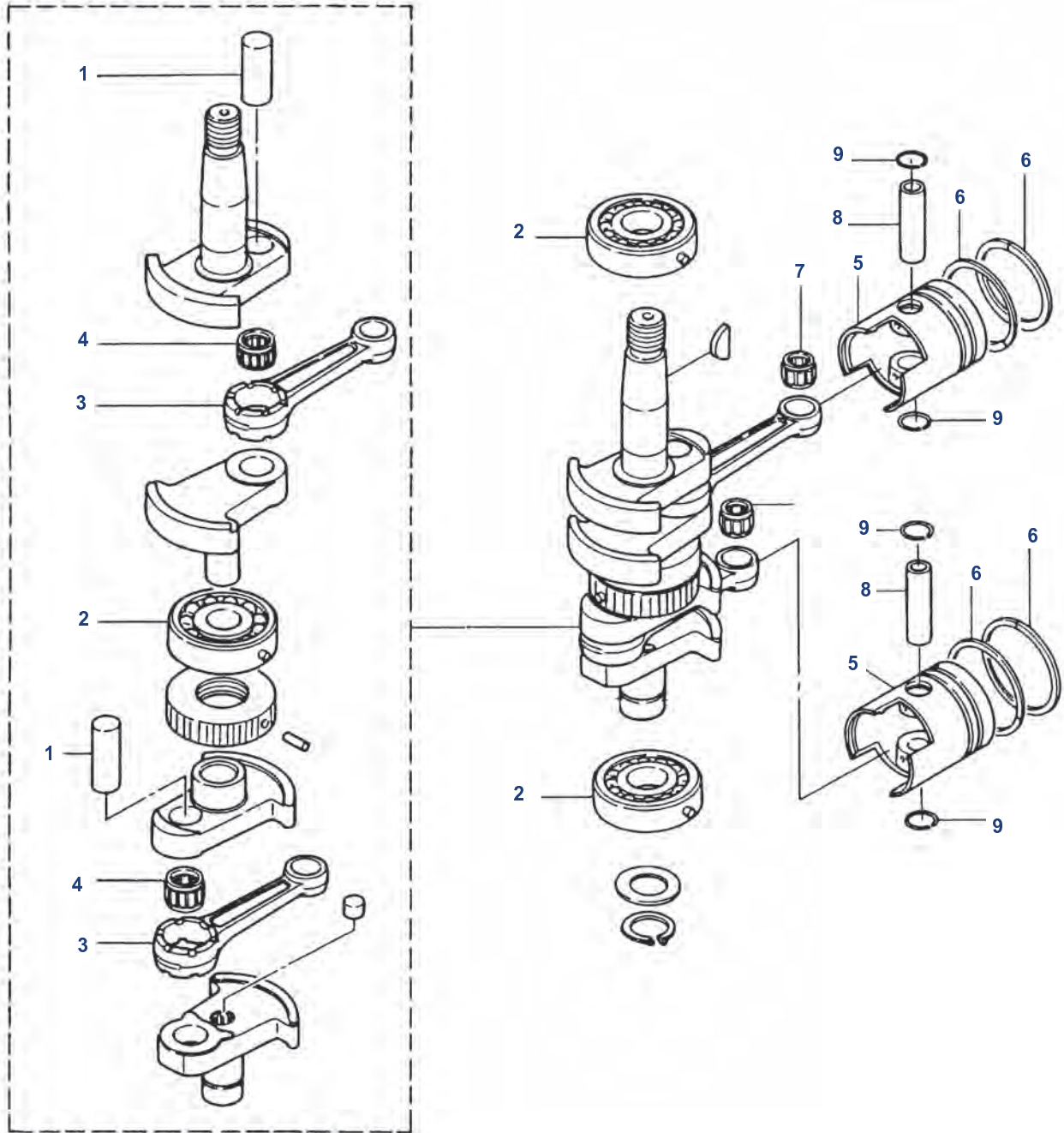
M4C / M5B / M5BS



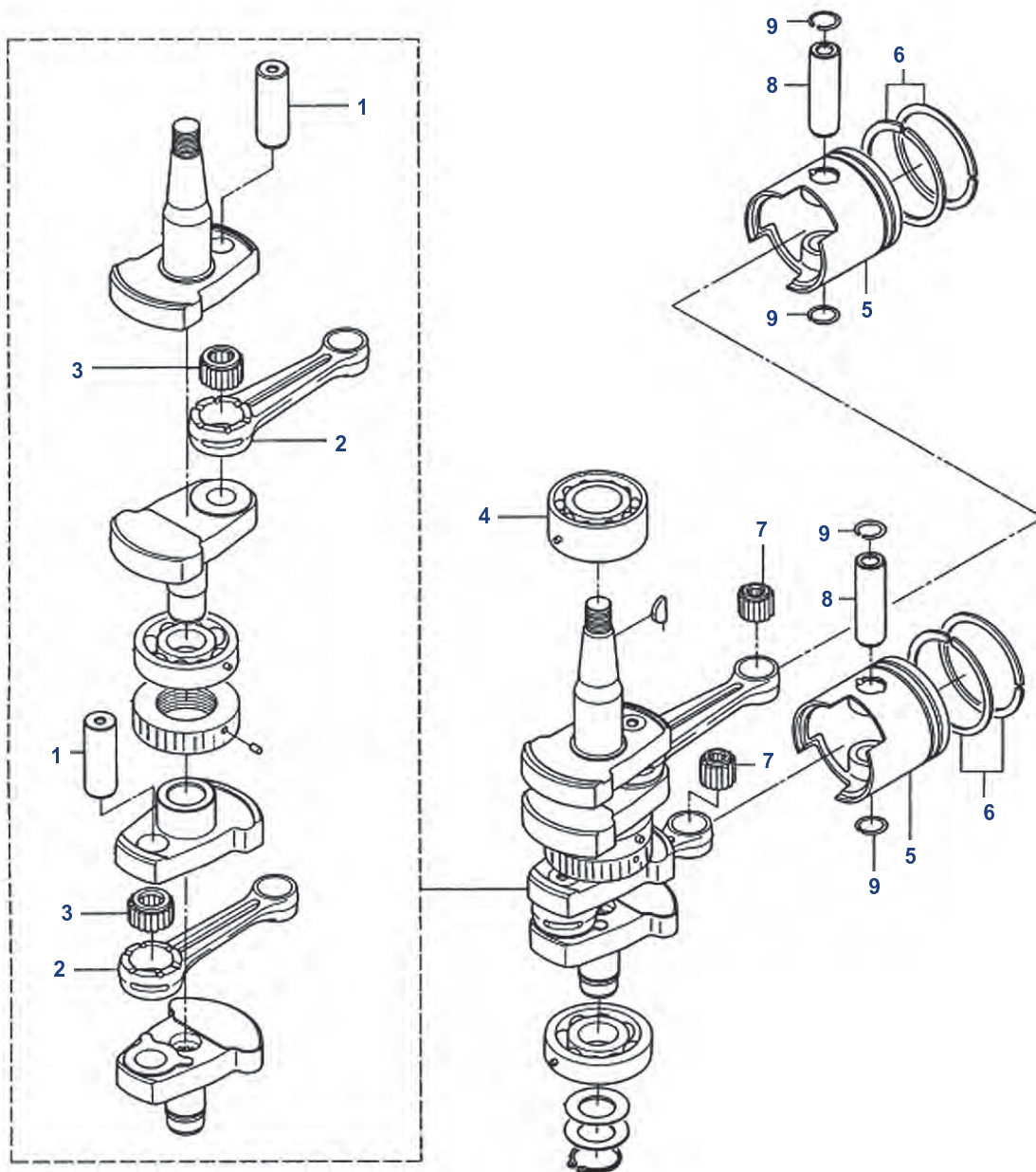
Nº	Ref.	R.O. OEM	Descripción	Description	Descrizione	Cantidad Quantity Quantità
1	REC813046002	369-00061-0	PIN	CRANK PIN	SPINOTTO	1
2		369-00040-0	BIELA	CONNECTING ROD	BIELLA	1
3	REC31-813048	369-00043-0	COJINETE DE AGUJA	NEEDLE BEARING	CUSCINETTO	1
4	REC30-16049	9603-3-6204	RODAMIENTO	BALL BEARING	CUSCINETTO	2
5	REC26-16051	369-00122-0	RETÉN ACEITE	OIL SEAL	PARALIO	2
6	REC31-16052	350-00042-0	COJINETE DE AGUJA	NEEDLE BEARING	CUSCINETTO	1
7	REC779-9615T	369-00001-0	PISTÓN STD	PISTON STD	PISTONE STD	1
8	REC8M0080357	351-00011-0	AROS	PISTON RING	FASCE	2
9	REC41-16056	369-00021-0	PIN	PISTON PIN	SPINOTTO	1
10	REC53-16057	350-00024-1	CLIP	CLIP	CLIP	2



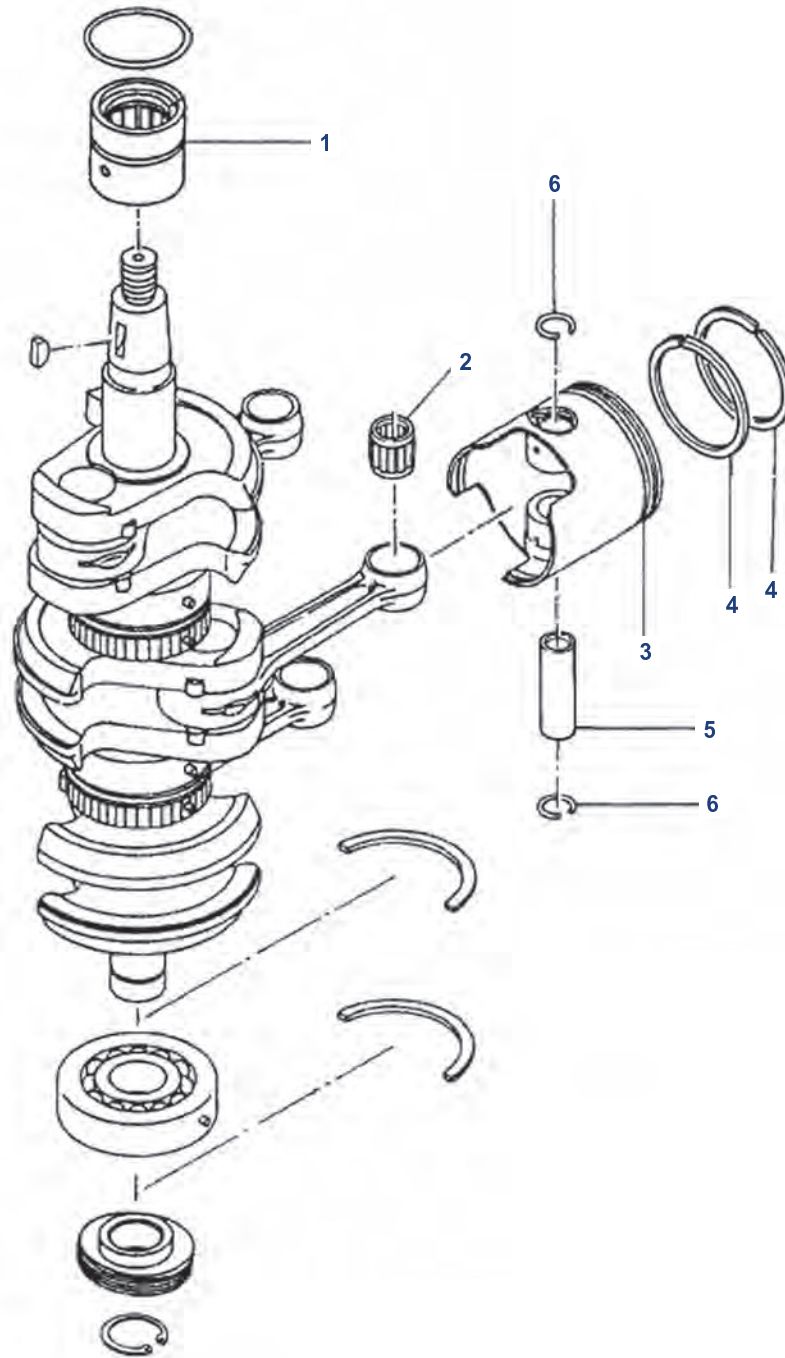
Nº	Ref.	R.O. OEM	Descripción	Description	Descrizione	Cantidad Quantity Quantità
1		3B2-0061-0	PIN	CRANK PIN	SPINOTTO	2
2	REC629-8036741	3B2-00040-0	BIELA	CONNECTING ROD	BIELLA	2
3	REC30-16049	9603-3-6204	RODAMIENTO	BALL BEARING	CUSCINETTO	1
4	REC26-85370711	3B2-00051-0	RETÉN ACEITE	OIL SEAL	PARALIO	1
5	REC30-16049	9603-3-6204	RODAMIENTO	BALL BEARING	CUSCINETTO	2
6	REC26-803514	101-00121-0	RETÉN ACEITE	OIL SEAL	PARALIO	1
7	REC31-8036752	338-00042-0	COJINETE DE AGUJA	NEEDLE BEARING	CUSCINETTO	2
8	REC779-804886	3B2-00001-0	PISTÓN STD	PISTON STD	PISTONE STD	2
9	REC39-803678A3	3B2-00011-0	AROS	PISTON RING	FASCE	4
10	REC41-8036801	3B2-00021-0	PIN	PISTON PIN	SPINOTTO	2
11	REC53-16057	350-00024-1	CLIP	CLIP	CLIP	2



Nº	Ref.	R.O. OEM	Descripción	Description	Descrizione	Cantidad Quantity Quantità
1	REC803673	350-00061-0	PIN	CRANK PIN	SPINOTTO	2
2	REC30-160494	96603-3-6305	RODAMIENTO	BALL BEARING	CUSCINETTO	3
3	REC629-803674	350-00040-0	BIELA	CONNECTING ROD	BIELLA	2
4	REC31-803675	3G4-00043-0	COJINETE DE AGUJA	NEEDLE BEARING	CUSCINETTO	2
5	REC779-803677T02	350-00001-1	PISTÓN STD, 18 HP	PISTON STD	PISTONE STD	1
	REC779-803677	351-00001-1	PISTÓN STD	PISTON STD	PISTONE STD	1
6	REC8M0080357	351-00011-0	AROS	PISTON RING	FASCE	2
7	REC31-16052	350-00042-0	COJINETE DE AGUJA	NEEDLE BEARING	CUSCINETTO	1
8	REC41-803680002	18HP 350-00021-0	PIN	PISTON PIN	SPINOTTO	2
	REC41-825713002	9.9/15 HP 332-00021-0	PIN	PISTON PIN	SPINOTTO	
9	REC53-16057	350-00024-1	CLIP	CLIP	CLIP	4
		334-00131-0	CHAVETA	KEY, MAGNETO	CHIAVETTA	



Nº	Ref.	R.O. OEM	Descripción	Description	Descrizione	Cantidad Quantity Quantità
1	REC8130461	334-00061-0	PIN	CRANK PIN	SPINOTTO	2
2	REC629-813047T01	336-00040-1	BIELA	CONNECTING ROD	BIELLA	2
3	REC31-8130482	356-00043-0	COJINETE DE AGUJA	NEEDLE BEARING	CUSCINETTO	2
4	REC30-16049T01	345-00113-0	RODAMIENTO	BALL BEARING	CUSCINETTO	1
5	REC779-879194T01	346-00001-1	PISTÓN STD	PISTON STD	PISTONE STD	2
6	REC39-16054A5	346-00011-0	AROS	PISTON RING	FASCE	4
7	REC345-00042-0	345-00042-0	COJINETE DE AGUJA	NEEDLE BEARING	CUSCINETTO	1
8	REC41-803680003	3C8-00021-0	PIN	PISTON PIN	SPINOTTO	2
9	REC53-16057	334-00024-1	CLIP	CLIP	CLIP	4

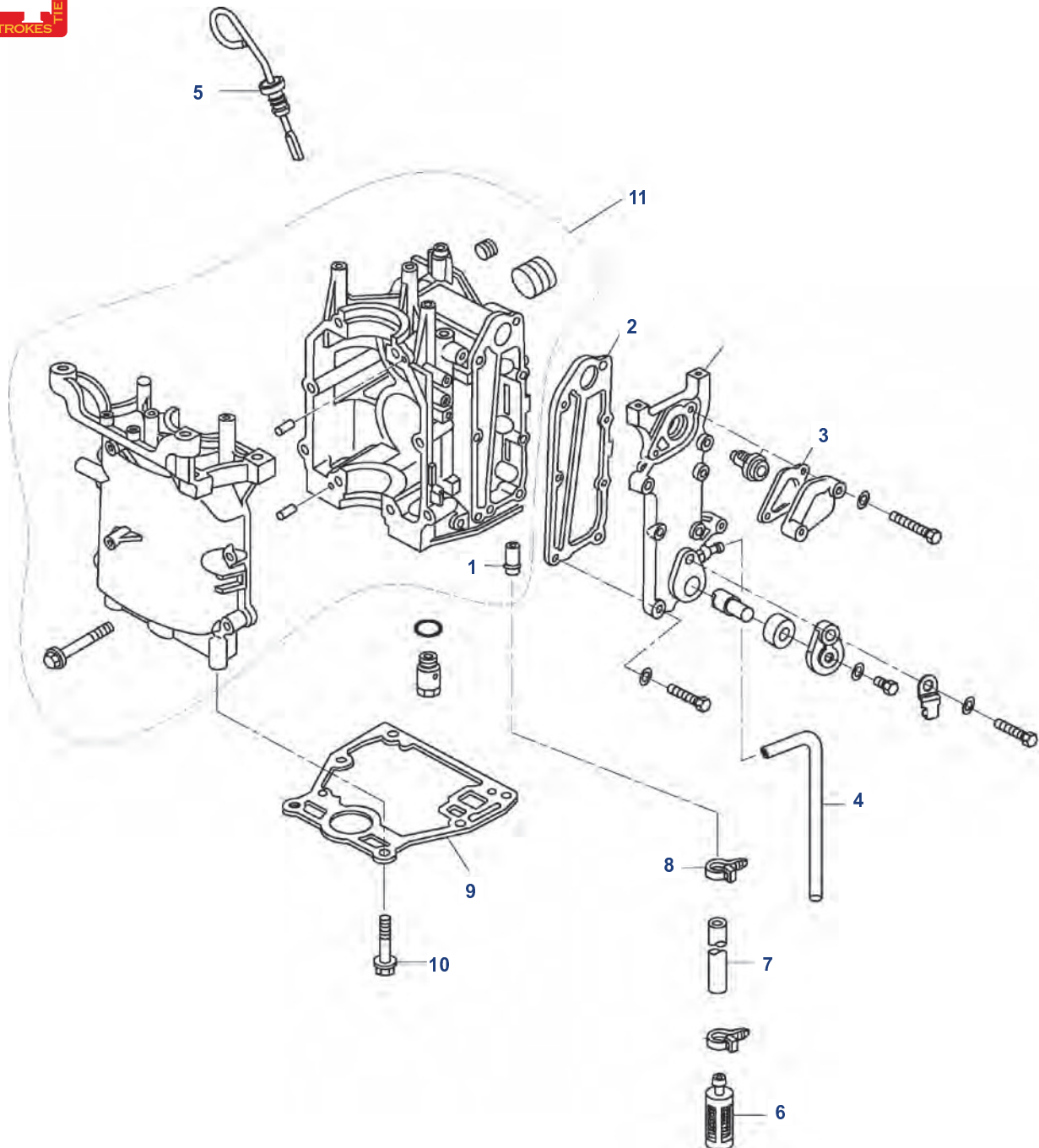


Nº	Ref.	R.O. OEM	Descripción	Description	Descrizione	Cantidad Quantity Quantità
1	REC31-85553	3C8-00113-0	RODAMIENTO SUP.	MAIN BEARING UPPER	CUSCINETTO SUPERIORE	1
2	REC345-00042-0	345-00042-0	COJINETE DE AGUJA	NEEDLE BEARING	CUSCINETTO	1
3	REC779-9615T	3C8-00001-3	PISTÓN STD	PISTON STD	PISTONE STD	1
4	REC8M0080349	346-00011-0	AROS	PISTON RING	FASCE	2
5	REC41-16056	3C8-00021-0	PIN	PISTON PIN	SPINOTTO	1
6	REC53-16057	334-00024-1	CLIP	CLIP	CLIP	2

# MOTOR MFS8 / MFS9.8 HP ENGINE MFS8 / MFS9.8 HP MOTORE MFS8 / MFS9.8 HP

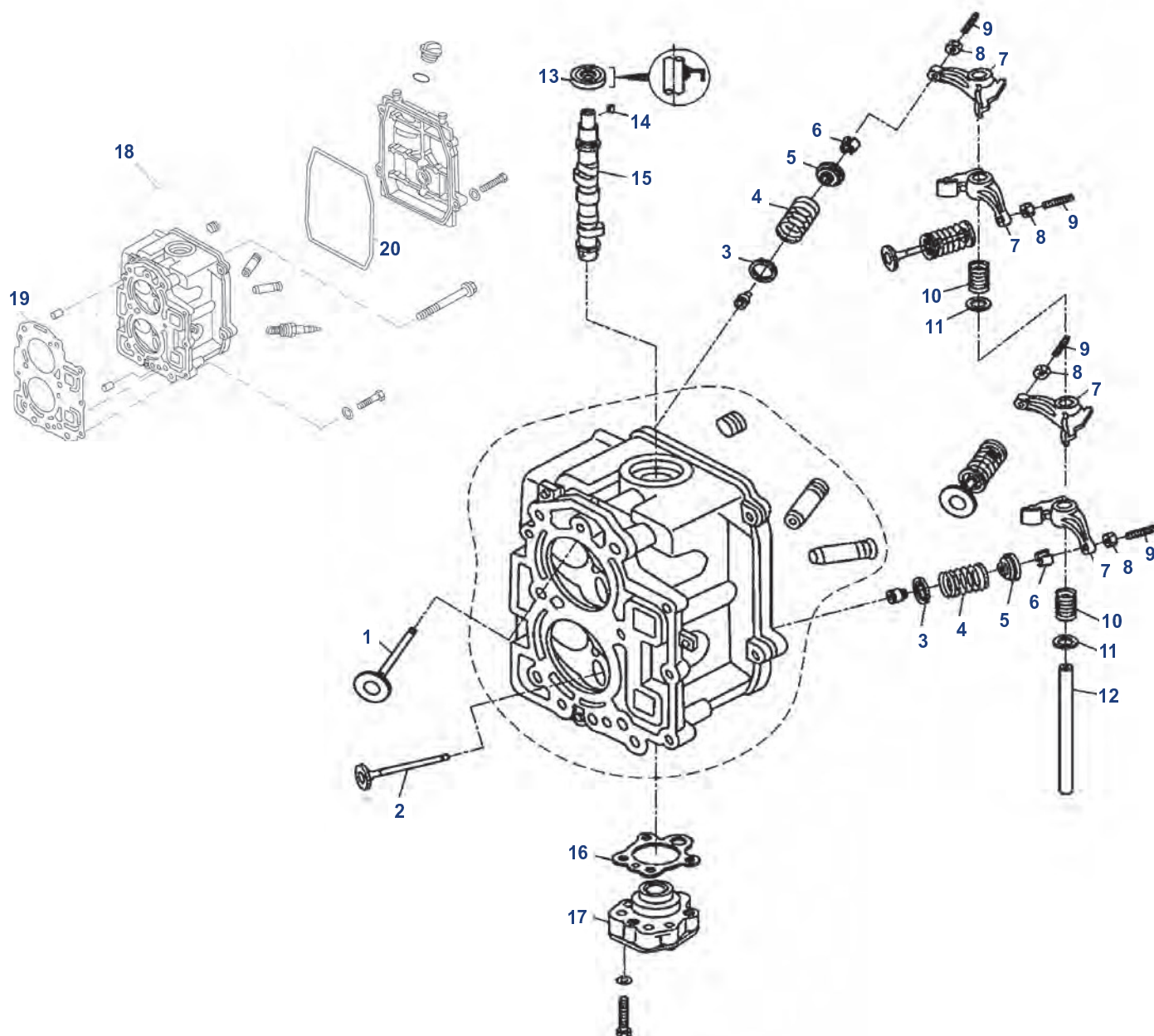


## BLOQUE MOTOR / CRANKCASE / BLOCCO



Nº	Ref.	R.O. OEM	Descripción	Description	Descrizione	Cantidad Qty Quantità
1	PAF8-05010002	3H8-02093-0	RACORD	NIPPLE	RACCORDO	1
2	PAF8-05010004	3V1-02305-0	JUNTA ESCAPE	GASKET, EXHAUST COVER	GUARNIZIONE SCARICCO	1
3	PAF8-05010005	346-01032-0	JUNTA TERMOSTATO	GASKET, THERMOSTAT COVER	GUARNIZIONE TERMOSTATO	1
4	PAF8-05000024	98AB-5-0330	TUBO	WATER PIPE	TUBO	1
5	PAF8-00000200	3V1-07421-0	MEDIDOR NIVEL ACEITE	OIL LEVEL GAUGE	MISURATORE LIVELLO OLIO	1
6	PAF8-05000800	3V1-07410-0	FILTRO ACEITE	OIL STRAINER	FILTRO OLIO	1
7	PAF8-05000017	98AH10-0120	MANGUERA	HOSE	TUBO	1
8	PAF8-05000025	369-84398-0	CLIP	HOOP	CLIP	2
9	PAF8-00000004	3V1-01303-0	JUNTA BASE MOTOR	GASKET, ENGINE BASEMENT	GUARNIZIONE BASE MOTORE	1
10	PAF8-00000003	3R3-61017-0	TORNILLO M8x35	BOLT M8x35	VITE M8x35	6
11	PAF8-05010000	3V1B01100-0	BLOQUE COMPLETO	CRANKCASSE ASSY	BLOCCO MOTORE	1

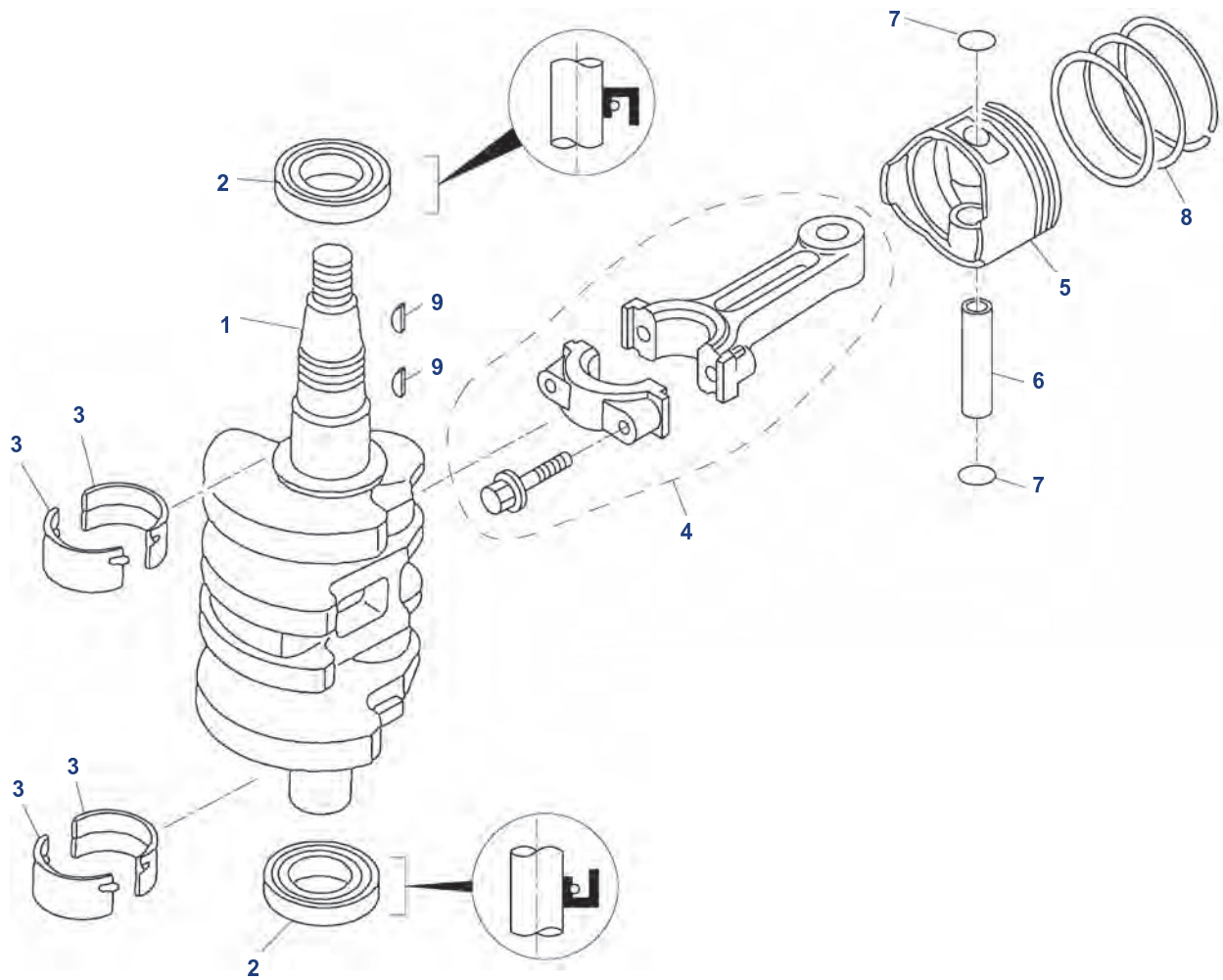
## CULATA / CYLINDER HEAD / TESTATA



Nº	Ref.	R.O. OEM	Descripción	Description	Descrizione	Cantidad Quantity Quantità
1	PAF8-05030001	3V1-07201-0	VÁLVULA ADMISIÓN	VALVE INTAKE	VALVOLA ASPIRAZIONE	2
2	PAF8-05030002	3V1-07202-0	VÁLVULA ESCAPE	VALVE EXHAUST	VALVOLA SCARICO	2
3	PAF8-05030004	3V1-07205-0	ASIENTO MUELLE	SEAL, VALVE SPRING	SIGILLO MOLLA	4
4	PAF8-05030005	3AA-07203-0	MUELLE VÁLVULA	SPRING VALVE	VALVOLA MOLLA	4
5	PAF8-05030006	3V1-07221-0	RETENCIÓN	RETAINER, VALVE SPRINGER	TENUTA	4
6	PAF8-05030007	3H6-07223-0	SEGURO	COTTER, VALVE	CHIUSURA SICUREZZA	8
7	PAF8-05030200	3V1-07235-0	BALANCÍN	ROCKER	BILANCERE	4
8	PAF15-07040304	3H8-07237-0	TUERCA	LOCK NUT	GHIERA	4
9	PAF15-07040303	3R0-07238-0	TORNILLO AJUSTE	SCREW, VALVE ADJUSTING	VITE	4
10	PAF8-05030009	3AA-07225-0	MUELLE	SPRING ROCKER	MOLLA	2
11	PAF8-05030015	3R3-07227-0	ARANDELA	BUSHER, ROCKER SPRING	RONDELLA	2
12	PAF8-005030010	3H8-07226-0	EJE	SHAFT ROCKER	ASSE	1
13	PAF8-05030011	3H8-07025-0	RETÉN ACEITE	OIL SEAL 18x35x7.8 mm	PARAOLIO	1
14	PAT3.6-04000006	309-00131-0	CHAVETA	KEY	CHIAVETTA	1
15	PAF8-05030008	3V1-07010-0	ÁRBOL DE LEVAS	CRAMSHAFT	ALBERO MOTORE	1
16	PAF8-05030012	3V1-07653-0	JUNTA BOMBA ACEITE	OIL PUMP GASKET	GUARNIZIONE POMPA OLIO	1
17	PAF8-05030300	3V1-07600-0	BOMBA ACEITE	OIL PUMP	POMPA OLIO	1
18	PAF8-05030100	3V1B01001-0	CULATA	CYLINDER HEAD ASSY	TESTATA	1
19	PAF8-05000100	3V1-02305-0	JUNTA CULATA	CYLINDER HEAD GASKET	GUARNIZIONE TESTATA	1
20	PAF8-05000002	3V1-01024-0	JUNTA TAPA CULATA	CYLINDER HEAD COVER GASKET	GUARNIZIONE COPERCHIO TESTATA	1

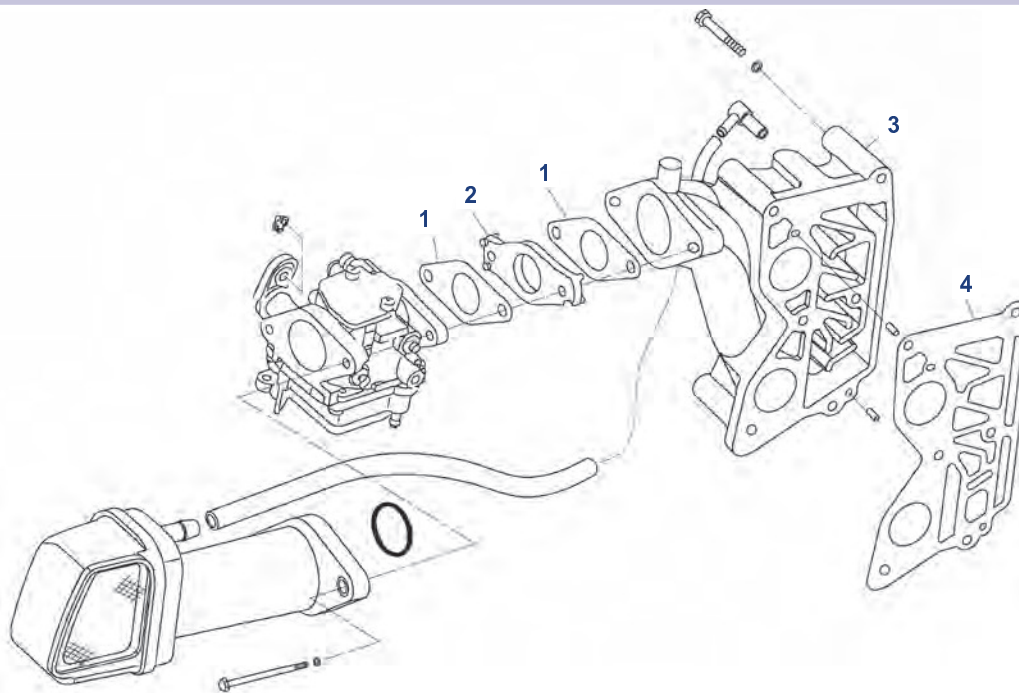


## CIGÜEÑAL Y PISTONES CRANKSHAFT & PISTON ALBERO MOTORE E PISTONI



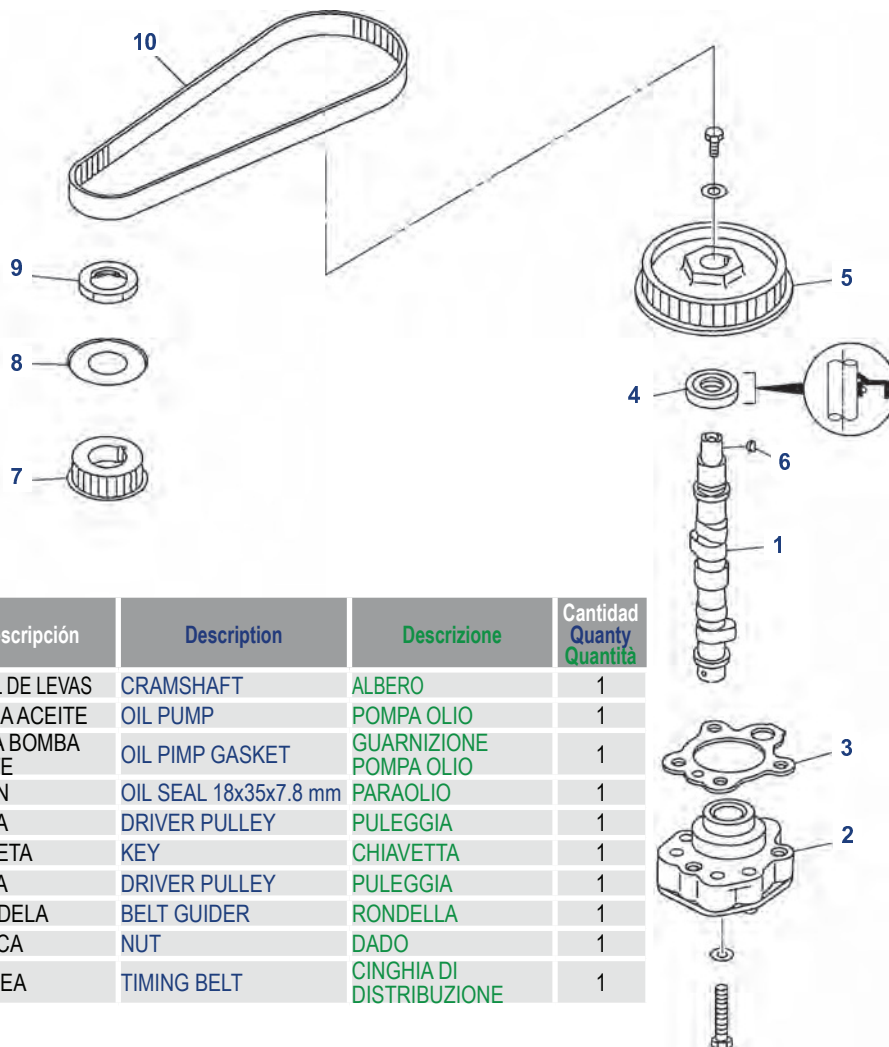
Nº	Ref.	R.O. OEM	Descripción	Description	Descrizione	Cantidad Qty Quantità
1	PAF8-05020001	3V1-00030-1	CIGÜEÑAL	CRANK	ALBERO MOTORE	1
2	PAF8-05010012	3V1-00121-0	RETÉN ACEITE	OIL SEAL	PARAOLIO	2
3	PAF8-05010009	3V1-07407-0	COJINETE	BUSH	BRONZINA	4
4	PAF8-05020200	3V1-00040-0	BIELA	CONNENCTING ROD	BIELLA	2
5	PAF8-05020101	3V1-00001-0	PISTON	PISTON	PISTONE	2
6	PAF8-05020105	332-00021-0	PIN	PIN, PISTON	SPINNOTO	2
7	PAF15-07020005	350-00024-1	CLIP	CIRCLIP	CLIP	4
8	PAF8-05020102	3V1-00011-0	ARO	RING	ANELLO	1
9	PAF4-04000019	3T5-10131-0	CHAVETA	KEY	CHIAVETTA	2

## ADMISIÓN / INTAKE / ASPIRAZIONE



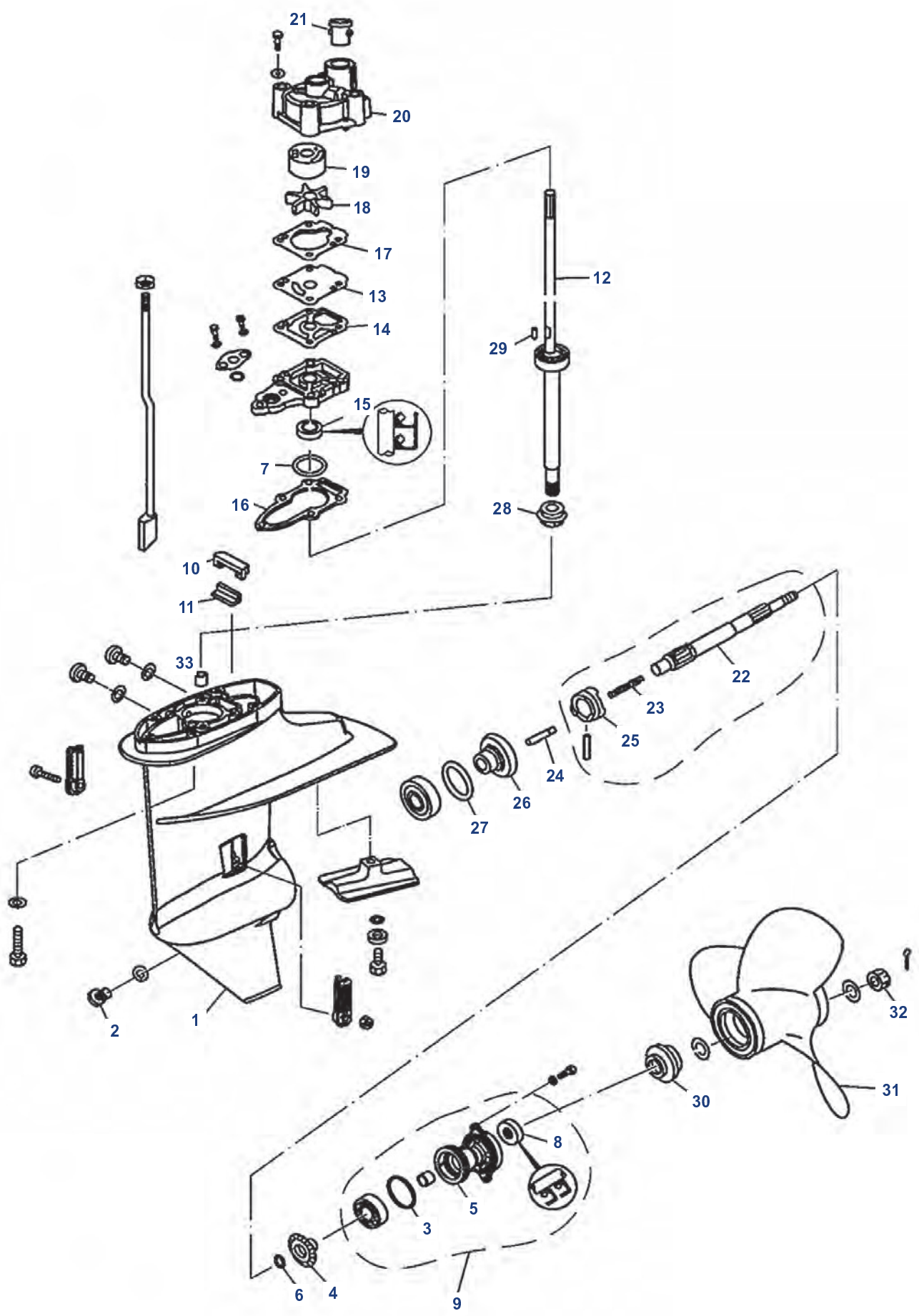
Nº	Ref.	R.O. OEM	Descripción	Description	Descrizione	Cantidad Qty Quantità
1	PAF15-07000017	3V1-02011-0	JUNTA CARBURADOR	GASKET CARBURETOR	GUARNIZIONE CARBURATORE	2
2	PAF15-07000018	3V1-03952-0	SEPARADOR	INSULATOR	ISOLANTE	1
3	PAF8-05000008	3V1-02010-1	COLECTOR ADMISIÓN	INTAKE MANIFOLD	COLLETTORE ASPIRAZIONE	1
4	PAF8-05000009	3V1-02104-0	JUNTA COLECTOR	GASKET MANIFOLD	GUARNIZIONE COLLETTORE	1

## DISTRIBUCIÓN / CRAMSHAFT / DISTRIBUZIONE



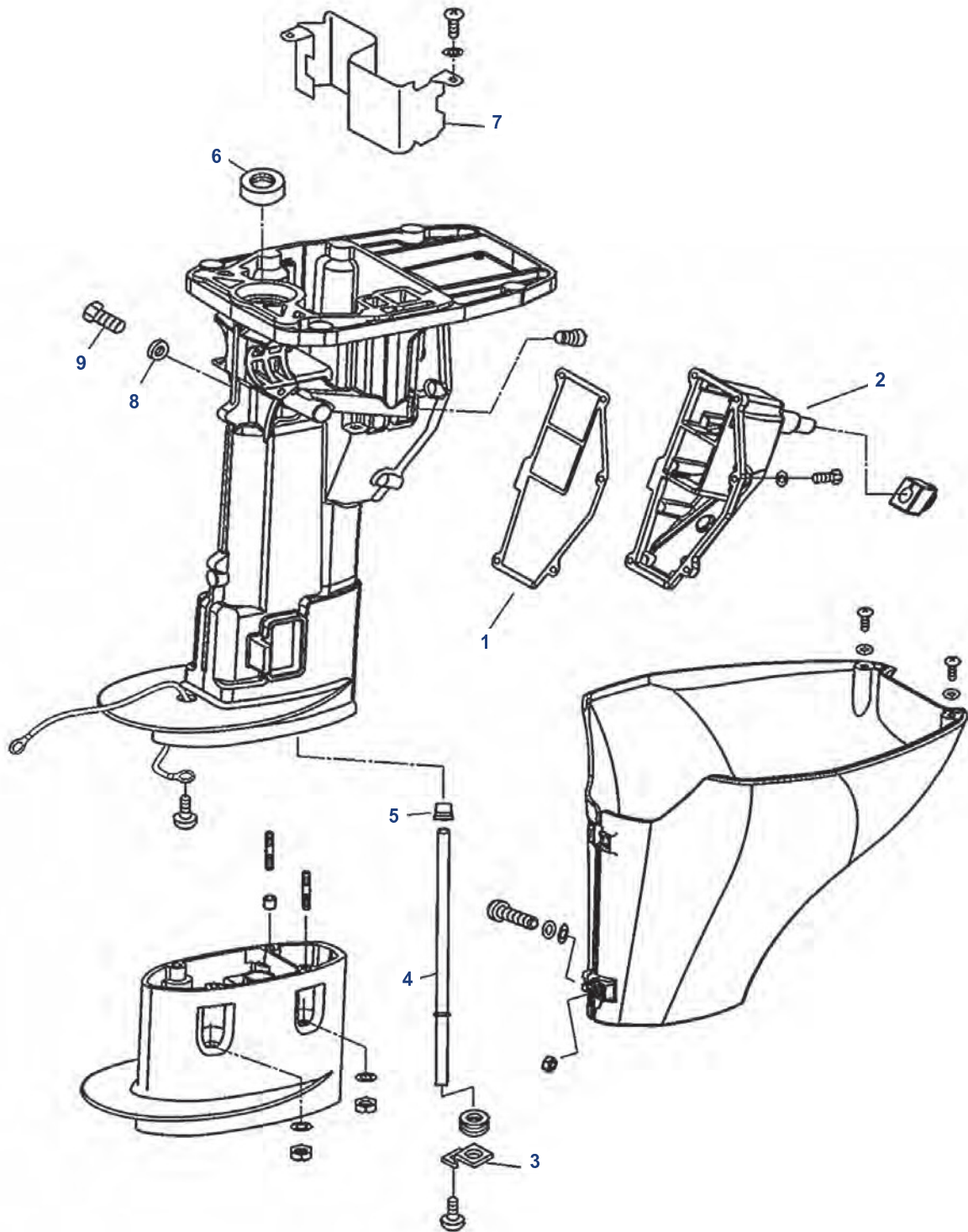
Nº	Ref.	R.O. OEM	Descripción	Description	Descrizione	Cantidad Qty Quantità
1	PAF8-05030008	3V1-07010-0	ÁRBOL DE LEVAS	CRAMSHAFT	ALBERO	1
2	PAF8-05030300	3V1-07600-0	BOMBA ACEITE	OIL PUMP	POMPA OLIO	1
3	PAF8-05030012	3V1-07653-0	JUNTA BOMBA ACEITE	OIL PIMP GASKET	GUARNIZIONE POMPA OLIO	1
4	PAF8-05030011	3H8-07025-0	RETÉN	OIL SEAL 18x35x7.8 mm	PARAOLIO	1
5	PAF8-05030400	3H8-10062-2	POLEA	DRIVER PULLEY	PULEGGIA	1
6	PAT3.6-04000006	309-00131-0	CHAVETA	KEY	CHIAVETTA	1
7	PAF8-05010014	3V1-10060-0	POLEA	DRIVER PULLEY	PULEGGIA	1
8	PAF8-05010015	3V1-10063-0	ARANDELA	BELT GUIDER	RONDELLA	1
9	PAF8-05010016	3V1-10068-0	TUERCA	NUT	DADO	1
10	PAF8-05000004	3V1-10045-0	CORREA	TIMING BELT	CINGHIA DI DISTRIBUZIONE	1

COLA INFERIOR / LOWER CASING & DRIVE / PARTE PIEDE INFERIORE



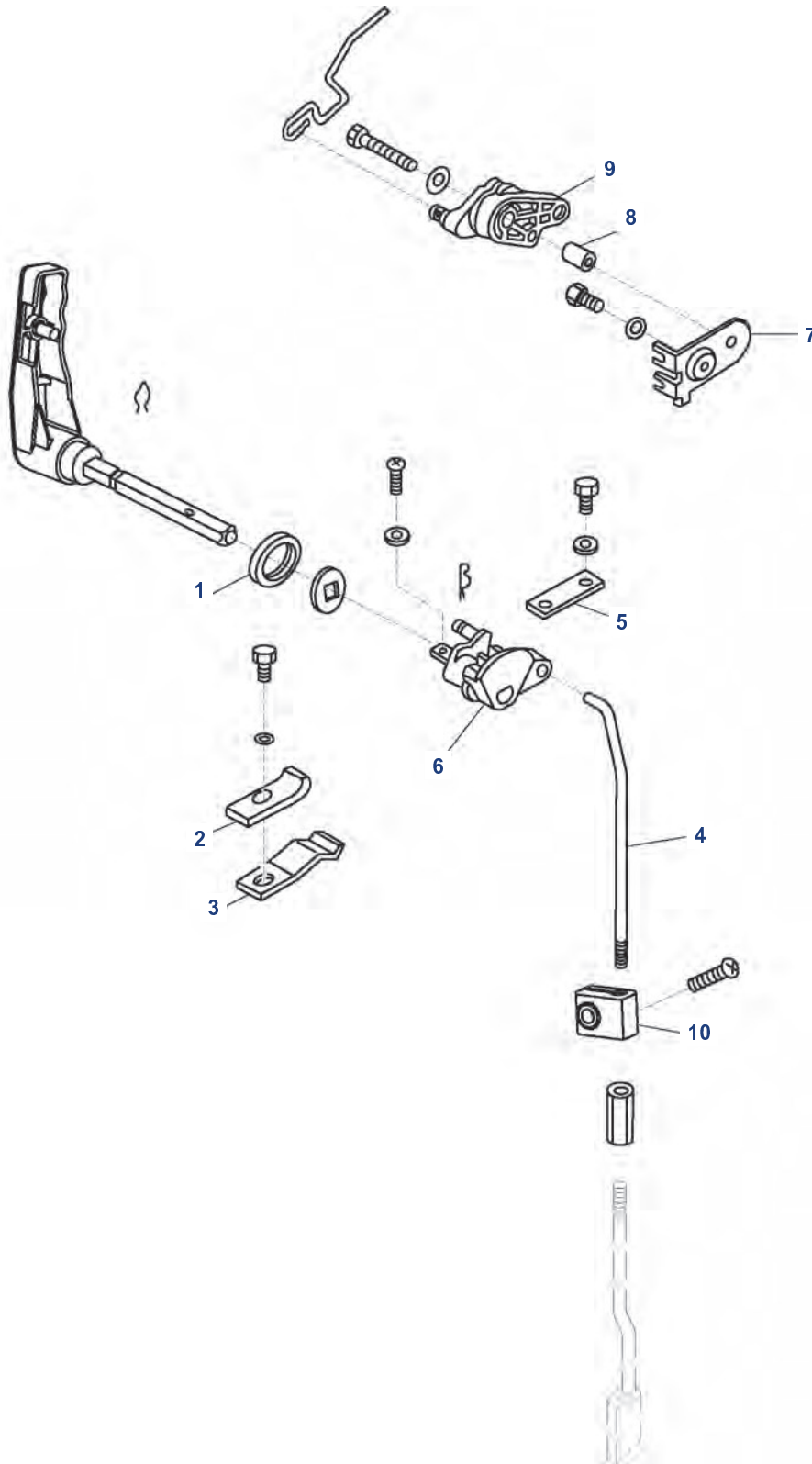
Nº	Ref.	R.O. OEM	Descripción	Description	Descrizione	Cantidad Qty Quantità
1	PAF4-03000024	332-60006-0	JUNTA	GASKET	GUARNIZIONE	3
2	PAF4-03000023	332-60005-2	CONECTOR	PLUG, OIL HOSE	CONNETTORE	3
3	PAF8-04040002	345-65015-0	TÓRICA	O-RING	ANELLO	1
4	PAF8-04000014	3B2-64030-0	PIÑÓN ATRÁS	GEAR REVERSE	PIGNONE MARCIA INDIETRO	1
5	PAF8-04040001	3B2S60101-0	DIÁBOLO	COVER, LOWE CASING	DIABOLO	1
6	PAF8-04000012	369-64032-0	ARANDELA	WASHER	RONDELLA	1
7	PAF8-04000004-1	3B2-64023-0	GRUESO	SHIM 0.10mm	SPESSORE	
8	PAF8-04040004	369-60111-0	RETÉN	OIL SEAL	PARAOILIO	1
9	PAF8-04040000	3B2S60100-0	DIÁBOLO	COVER ASSY	DIABOLO	1
10	PAF8-04000016	3V1-60041-0	JUNTA	GASKET, WATER SEAL	GUARNIZIONE	1
11	PAF8-04000015	3V1-60042-0	RETÉN	WATER SEAL	TENUTA	1
12	PAF8-04020001L	3V1-64307-1	EJE (L)	DRIVE SHAFT ASSY (L)	ASSE (L)	1
12	PAF8-04020001S	3V1-64306-1	EJE (S)	DRIVE SHAFT ASSY (S)	ASSE (S)	1
13	PAF8-04000007	3B2-65025-0	PLACA	OUTER PLATE	PIASTRA	1
14	PAF8-04000006	3B2-65029-0	JUNTA	GASKET, OUTER PLATE	GUARNIZIONE	1
15	PAF8-04000101	309-60111-0	RETÉN	OIL SEAL	PARAOILIO	1
16	PAF8-04000005	3B2-65020-0	JUNTA	GASKET, WATER PUMP SEAT	GUARNIZIONE	1
17	PAF8-04000008	3B2-65018-0	JUNTA	GASKET, OUTER PLATE	GUARNIZIONE	1
18	PAF8-04000200	3B2-65021-1	IMPULSOR	IMPELLER	GIRANTE	1
19	PAF8-04000010	3B2-65011-0	CASQUILLO	INNER SHELL, WATER PUMP	BOCCOLA	1
20	PAF8-04000009	3B2-65016-0	BOMBA DE AGUA	WATER PUMP	POMPA D'ACQUA	1
21	PAF8-04000013	3B2-65016-0	RETÉN	SEAL	TENUTA	1
22	PAF8-04000301	3V1-64211-0	EJE HÉLICE	SHAFT, PROPELLER	ASSE ELICHE	1
23	PAF8-04000302	3V1-64221-0	MUELLE	SPRING, CLUTCH	MOLLA	1
24	PAF8-04000305	369-64223-0	PIN	PIN CLUTCH	SPINOTTO	1
25	PAF8-04000303	3B2-64215-0	SELECTOR	CLUTCH, DOG	SELETT ORE	1
26	PAF8-04010000	3B2-64010-0	PIÑÓN ADELANTE	GEARM FORWARD	PIGNONE AVANTI	1
27	PAF8-04000012-1	369-64014-0	GRUESO	SHIM 0.10mm	SPESSORE	1
27	PAF8-04000012-2	369-64015-0	GRUESO	SHIM 0.15mm	SPESSORE	1
28	PAF8-04000003	3B2-64020-0	PIÑÓN	PINION	PIGNONE	1
29	PAF8-04000021	3B2-65022-0	PIN	PIN, DOWER	SPINOTTO	1
30	PAF8-04000019	3B2-64230-1	GRUESO	CUSHION, PROPELLER	SPESSORE	1
31	PAF8-04050000	3B2W64517-0	HÉLICE	PROPELLER ASSY	ELICHE	1
32	PAF15-06000016	369-64121-0	TUERCA	NUT, HEXAGON	DADO	1
33	PANSKFJ-1516	3V1-60211-0	RODAMIENTO	BEARING	CUSCINETTO	1

**COLA SUPERIOR / UPPER CASING & DRIVE / PARTE PIEDE SUPERIORE**



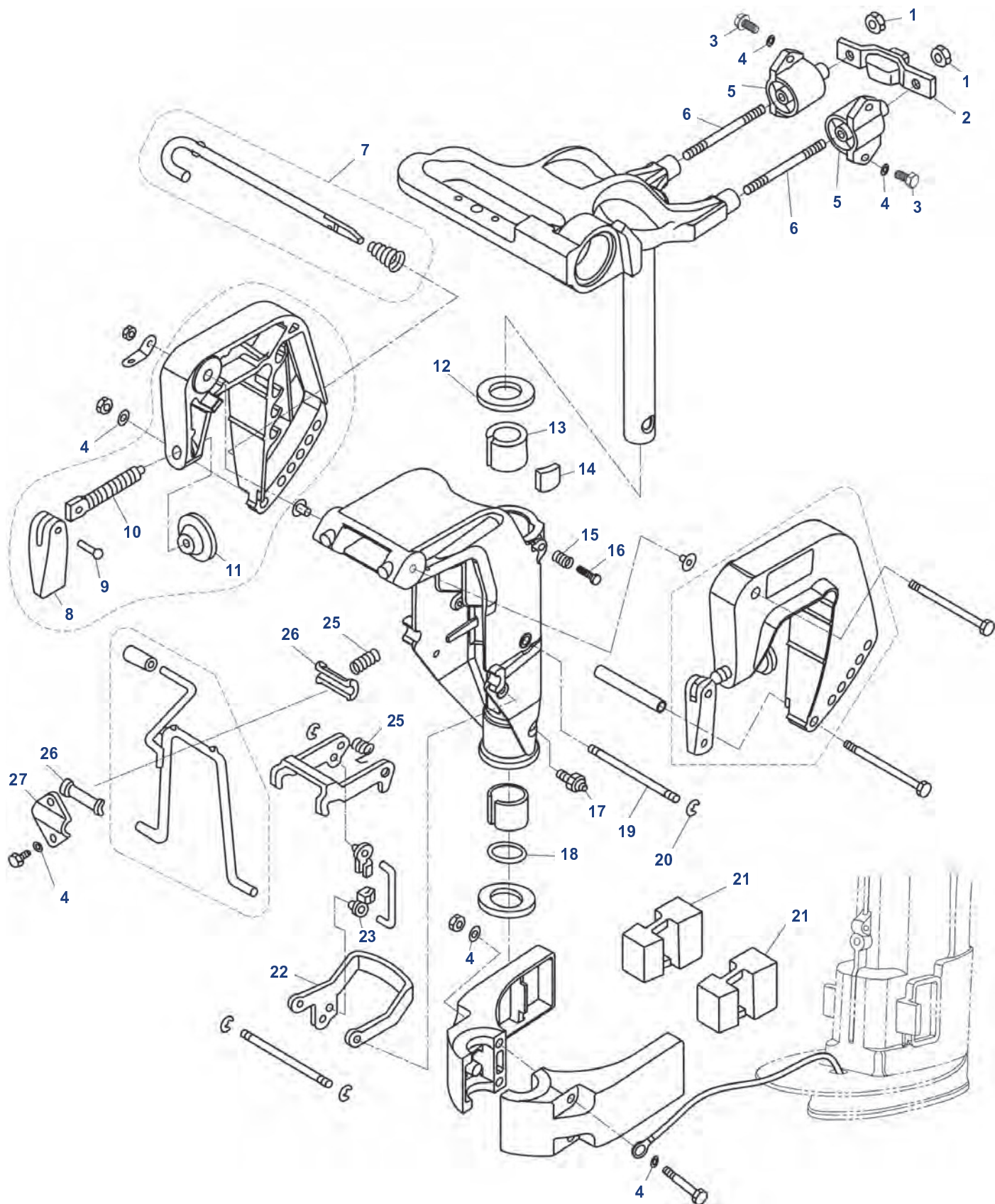
Nº	Ref.	R.O. OEM	Descripción	Description	Descrizione	Cantidad Quantity Quantità
1	PAF8-02000004	3V1-61220-0	JUNTA	GASKET, EXHAUST OUTER COVER	GUARNIZIONE	1
2	PAF8-02000005	3V1-61208-0	TAPA ESCAPE	EXHAUST OUTER COVER	COPERCHIO SCARICO	1
3	PAF8-02000009	3V1-65203-0	PIPA	ALATE, WATER PIPE	TUBO	1
4	PAF8-02000006(L)	3V1-65110-0	TUBO (L)	WATER PIPE (L)	TUBO (L)	1
4	PAF8-02000006(S)	3V1-65100-0	TUBO (S)	WATER PIPE (S)	TUBO (S)	1
5	PAF8-02000007	3V1-65206-0	RETÉN	UPPER SEAL, WATER PIPE	TENUTA	1
6	PAF8-02000002	3B2-01215-0	RETÉN	OIL SEAL	PARAOLIO	1
7	PAF8-02000003	3V1-07440-0	SEPARADOR	CLAPBOARD, OIL SUMP	ASSICELLA, COPPA OLIO	1
8	PAF15-04000003	3R3-07406-0	JUNTA	GASKET	GUARNIZIONE	1
9	PAF15-04000002	3R3-07405-1	TAPÓN	BOLT, OIL DRAIN	TAPPO	1

CAMBIO / CONTROL SYSTEM / CALANDRA



Nº	Ref.	R.O. OEM	Descripción	Description	Descrizione	Cantidad Quantity Quantità
1	PAF8-03010001	3V1-66187-0	ARANDELA	WASHER, HANDLE	RONDELLA	1
2	PAF8-03010006	3C8-66116-0	PLACA	PLATE, SHIFTLVER STOPPER	PIASTRA	1
3	PAF8-03010005	3B2-66113-0	TOPE	STOPPER, SHIFTLVER	TAPPO	1
4	PAF8-03000010	3V1-66211-0	EJE	SHIFTL ROD	ASSE	1
5	PAF8-03010007	3B1-66145-0	PLACA	PLATE	PIASTRA	1
6	PAF8-03010003	3V1-66225-0	SEGURO	BLOCK	BLOCCAGGIO	1
7	PAF8-05000020	3V1-63508-0	PLACA	PALTE	PIASTRA	1
8	PAF8-05000018	346-67114-0	CASQUILLO	BUSH	BOCCOLA	1
9	PAF8-05000019	3V1-63622-0	POLEA	MAIN PULLEY	PULEGGIA	1
10	PAF8-03000011	3V1-66302-0	SEGURO	LOCK BLOCK	BLOCCAGGIO	1

# SOPORTE MOTOR / BRACKET / SUPPORTO MOTORE

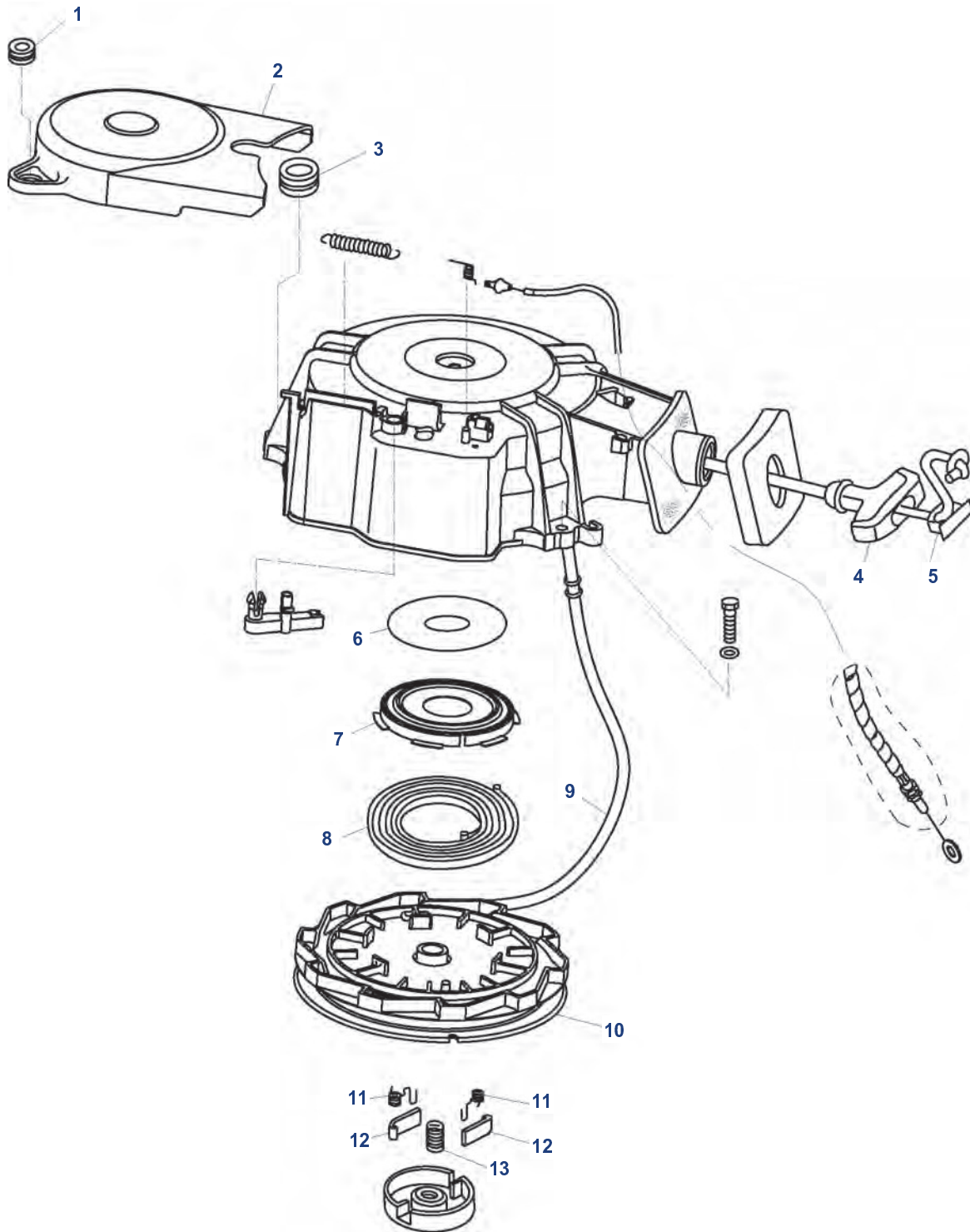


Nº	Ref.	R.O. OEM	Descripción	Description	Descrizione	Cantidad Qty Quantità
1	PAGB/T889.1-M8	3V1-61324-0	TUERCA	NUT M8	DADO	2
2	PAF8-00000100	3V1-61333-1	SILENBLOCK	ABSORBER (FRONT)	SILENTBLOCK	1
3	PAGB/T5783-M6X20	910184-5620	TORNILLO	BOLT M6x20	VITE	4
4	PAGB/T97.1-6	910184-5620	ARANDELA	WASHER	RONDELLA	11
5	PAF8-02000100	3V1-61301-1 940113-0800	SILENBLOCK	ABSORBER ASSY	SILENBLOCK	2
6	PAF8-01000003	3V1-61313-0	TORNILLO	DICEPHALOUS BOLT M8x65	VITE	2
7	PAF8-01010200	350-62121-1 369-62122-2	EJE	THRUST ROD ASSY	ASSE	1
8	PAF4-01010004	332S62102-1	MANITA	CLAMP HANDLE, STERN	MANIGLIA	2
9	PAF4-01010005	3C8-62104-1	RIBETE	RIVET, CLAMP HANDLE	RIVETTO	2
10	PAF4-01010002	398-62103-0	TORNILLO	CLAMP SCREW	VITE	2
11	PAF4-01010003	332-62101-0	ARANDELA	CLAMP PAD	RONDELLA	2
12	PAF8-01000001	350-62423-0	ARANDELA	WASHER, ROTARY BRACKET	RONDELLA	2
13	PAF8-01000002	350-62417-0	CASQUILLO	BUSHING	BOCCOLA	2
14	PAF8-01000100	345-62441-0	SEGURO	LOCKING BLOCK ASSY	CHIUSURA SICUREZA	1
15	PAF8-01010102	346-62421-1	MUELLE	SPRING, LOCKING	MOLLA	1
16	PAGB/T5783-M8X30	910113-0830	TORNILLO	BOLT M8x30	VITE	1
17	PAJB/T7940.1-M6	344-67177-0	ENGRASADOR	OILER M6	INGRASSATORE	1
18	PAJASOF40435-022	350-62415-0	RETÉN	O-RING Ø22.4xø3.5	TENUTAANELLO	1
19	PAF8-01010108	3B2-66321-1	EJE	SHAFT, ROTARY BRACKET	ASSE	2
20	PAGB/T896-5	945303-0500	CLIP	CIRCLIP5	CLIP	4
21	PAF8-00000002	3V1-61302-0	AMORTIGUADOR	ABSORBER	AMMORTIZZATORE	2
22	PAF8-01010106	3V1-66313-0	UÑA	OUTER FRAME, ROTARY BRACKET	CORNICE ESTERNA	1
23	PAF8-01010112	3K9-05223-0	ADAPTADOR	TIE-IN, CONNECTING ROD	ADATTATORE	1
24	PAF8-01010109	3B2-66315-0	MUELLE	SPRING, WREST	MOLLA	1
25	PAF8-01010104	369-66112-1	MUELLE	SPRING, SUPPORT	MOLLA	1
26	PAF8-01010103	393-62437-0	PASADOR	PIN	PIN	2
27	PAF8-01010105	369-62439-1	PLACA	PRESS PLATE	PIASTRA	1





## ARRANQUE / STARTER ASSY / AVVIAMENTO



Nº	Ref.	R.O. OEM	Descripción	Description	Descrizione	Cantidad Quanti Quantità
1	PAF8-0500003	172-36008-0	RETÉN	RUBBER GROMMET A	TENUTA	2
2	PAF8-0500012	3V1-06308-0	TAPA	COVER, STRAP	COPERCHIO	1
3	PAF8-0500013	3V1-06302-0	RETÉN	RUBBER GROMMET B	TENUTA	1
4	PAF4-04130101	3AA-05019-0	TIRADOR	HANDLE, STARTER	MANIGLIA	1
5	PAF4-04130102	3R1-05131-0	TAPA	COVER, HANDLE	COPERCHIO	1
6	PAF8-05050002	3V1-05259-0	ARANDELA	WASHER, THRUST	RONDELLA	1
7	PAF8-05050003	3R1-05125-0	MUELLE	SPRING CASE	MOLLA	1
8	PAF8-05050004	3AA-05004-0	MUELLE	VOLUTE SPRING	MOLLA	1
9	PAF8-05050018	3AA-05013-0	CUERDA	START LINE	CORDA DI AVVIAMENTO	1
10	PAF8-05050005	3V1-05104-1	VOLANTE	WHELL, START-UP	VOLANTE	1
11	PAF8-05050007	3R1-05012-0	MUELLE	SPRING, TENSIÓN	MOLLA	2
12	PAF8-05050006	3R1-05003-1	UÑA PLÁSTICA	PAWL, DRIVE	NOTTOLINO	2
13	PAF8-05050009	3R1-05007-0	MUELLE	SPRING PLATE	MOLLA	1

# PISTONES, AROS, BULONES Y RODAMIENTOS

## PISTONS, RINGS, PINS AND BEARINGS

### PISTONI, FASCE, BULLONI E CUSCINETTI

Ref.	Medida Size Misura	Cyl.	Motores Engines Motori
WI3157P3	2.785" / 030	2	25 HP - M25C2 30 HP - M30A3
WI3155PS	2.755" / STD	2	40 HP - M40C
WI3155P3	2.785" / 030	2	40 HP - M40C
WI3156P3	2.707" / 030	3	60 HP - M40D 50 HP - M450D
WI3154PS	2.913" / STD	3	60 HP - M60B 70 HP - M70B
WI3153PS	3.385" / STD	3	90 HP - M90A
WI3153P3	3.415" / 030	3	90 HP - M90A
WI3152PS	3.464" / STD	4	115 HP - M115A 120 HP - M12A M120A 140 HP - M140A



Ref.	R.O.		
REC779-9615T	369-00001-0	Pistón / Piston / Pistoni	STD
REC41-16056	369-00021-0	Bulón / Pin / Bullone	
	369-00040-0	Biela / Connecting rod / Biella	
REC8M0080357	351-00011-0	Aros / Rings / Fasce	STD
REC53-16057	350-00024-1	Clip	
REC31-16052	350-00042-0	Rodamineto / Bearing / Cuscinetto	

**MOTORES / ENGINES / MOTORI**  
M4C / M5B / M5BS (1 Cyl)



Ref.	R.O.		
REC779-804886	3B2-00001-0	Pistón / Piston / Pistoni	STD
REC41-8036801	3B2-00021-0	Bulón / Pin / Bullone	
REC629-8036741	3B2-00040-0	Biela / Connecting rod / Biella	
REC39-803678A3	3B2-00011-0	Aros / Rings / Fasce	STD
REC53-16057	350-00024-1	Clip	
REC31-8036752	338-00042-0	Rodamineto / Bearing / Cuscinetto	

**MOTORES / ENGINES / MOTORI**  
M6B / M8B / M9.8B (2 Cyl)



Ref.	R.O.		
REC779-803677	351-00001-0	Pistón / Piston / Pistoni	STD
REC41-825713002	332-00021-0	Bulón / Pin / Bullone	
REC629-803674	350-00040-0	Biela / Connecting rod / Biella	
REC8M0080357	351-00011-0	Aros / Rings / Fasce	STD
REC53-16057	350-00024-1	Clip	
REC31-16052	350-00042-0	Rodamineto / Bearing / Cuscinetto	

**MOTORES / ENGINES / MOTORI**  
M9.9D2 / M15D2 (2 Cyl)



Ref.	R.O.		
REC779-803677T02	350-00001-1	Pistón / Piston / Pistoni	STD
REC41-803680002	350-00021-0	Bulón / Pin / Bullone	
REC629-803674	350-00040-0	Biela / Connecting rod / Biella	
	350-00011-0	Aros / Rings / Fasce	STD
REC53-16057	350-00024-1	Clip	
REC31-16052	350-00042-0	Rodamineto / Bearing / Cuscinetto	

**MOTORES / ENGINES / MOTORI**  
M18E2 (2 Cyl)



Ref.	R.O.		
REC779-879194T01	346-00001-1	Pistón / Piston / Pistoni	STD
REC41-803680003	3C8-00021-0	Bulón / Pin / Bullone	
REC629-813047T01	336-00040-1	Biela / Connecting rod / Biella	
REC39-16054A5	346-00011-0	Aros / Rings / Fasce	STD
REC53-16057	350-00024-1	Clip	
REC345-00042-0	345-00042-0	Rodamineto / Bearing / Cuscinetto	

**MOTORES / ENGINES / MOTORI**  
M25C3 / M30A4 (2 Cyl)



Ref.	R.O.		
REC779-96152	3C8-00001-3	Pistón / Piston / Pistoni	STD
REC41-803680003	3C8-00021-0	Bulón / Pin / Bullone	
REC8M0080349	356-00011-0	Aros / Rings / Fasce	STD
	346-00011-0		
REC53-16057	334-00024-1	Clip	
REC345-00042-0	345-00042-0	Rodamineto / Bearing / Cuscinetto	

**MOTORES / ENGINES / MOTORI**  
M40D2 / M50D2 (3 Cyl)



Ref.	R.O.		
PAF8-05020101	3V1-00001-0	Pistón / Piston / Pistoni	STD
PAF8-05020105	332-00024-0	Bulón / Pin / Bullone	
PAF8-05020200	3V1-00040-0	Biela / Connecting rod / Biella	
	3V1-87123-0	Aros / Rings / Fasce	STD
PAF15-07020005	350-00024-1	Clip	

**MOTORES / ENGINES / MOTORI**  
MFS8 / 9.8A-A2-A3 (2 Cyl)



## RODAMIENTO CIGÜEÑAL CRANK BEARING CUSCINETTO ALBERO MOTORE

SUPERIOR / UPPER / SUPERIORE

Ref.	R.O.
REC30-898101936	9643-3-6004

MOTORES / ENGINES / MOTORI

M2.5A  
M3.5A-B



INFERIOR / UNDER / INFERIORE

Ref.	R.O.
REC30-95307	9643-3-6202

MOTORES / ENGINES / MOTORI

M2.5A  
M3.5A-B



## JUNTA DE CULATA GASKET CYLINDER HEAD GUARNIZIONE TESTATA

## JUNTA DE CULATA GASKET CYLINDER HEAD GUARNIZIONE TESTATA

Ref.	R.O.
REC309-01005-2	309-01005-2

MOTORES / ENGINES / MOTORI

M2.5 / M2.5A / M2.5A2  
M3.5A / M3.5A2



Ref.	R.O.
REC3B2-01005-0	3B2-01005-0

MOTORES / ENGINES / MOTORI

M6B / M8B / M9.8B



Ref.	R.O.
REC351-01005-0	351-01005-0

MOTORES / ENGINES / MOTORI

M9.9D / M15D  
M9.9D2 / M15D2



Ref.	R.O.
REC350-01005-0	350-01005-0

MOTORES / ENGINES / MOTORI

M18E2



Ref.	R.O.
REC346-01005-0	346-01005-0

MOTORES / ENGINES / MOTORI

M25C3  
M30A4



Ref.	R.O.
REC3C8-01005-4	3C8-01005-4

MOTORES / ENGINES / MOTORI

M40D2  
M50D2



Ref.	R.O.
REC3F3-01005-0	3F3-01005-0

MOTORES / ENGINES / MOTORI

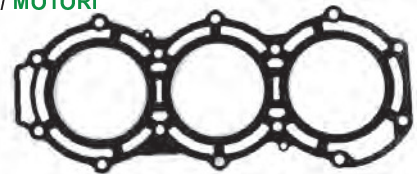
M60C  
M70C



Ref.	R.O.
REC3T9-01005-0	3T9-01005-0

MOTORES / ENGINES / MOTORI

MD70 / MD90

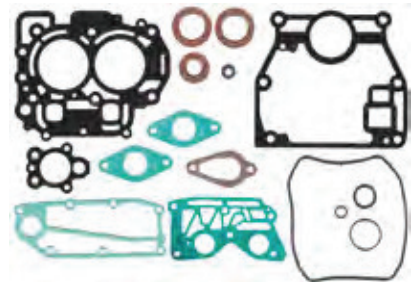


## KIT JUNTAS GASKET KIT KIT GUARNIZIONE

Ref.	R.O.	Tiempos Stroke Tempi
REC3V1-87121-0	3V1-87121-0	4

MOTORES / ENGINES / MOTORI

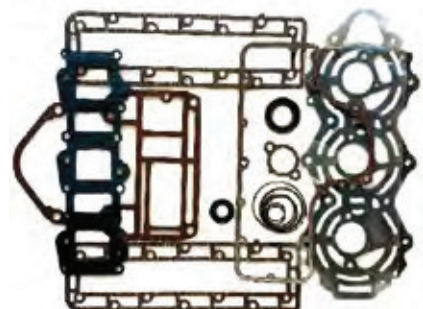
MFS8A -8A2  
MFS9.8A / 9.8A2



Ref.	R.O.
REC3T5-87121-6	3T5-87121-6

MOTORES / ENGINES / MOTORI

MD40B2  
MD50B2



TOHATSU

RECAMBIOS  
MARINOS S.L.

Ref.	R.O.
REC3F3-87121-1	3F3-87121-7

MOTORES / ENGINES / MOTORI

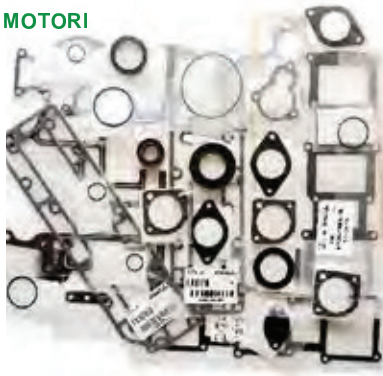
M60C  
M70C



Ref.	R.O.
REC3B7-87121-1	3B7-87121-7

MOTORES / ENGINES / MOTORI

M80A  
M90A

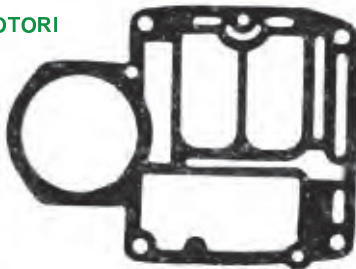


**JUNTAS BASE MOTOR  
GASKET, ENGINE HOLDER  
GUARNIZIONE, BASE MOTORE**

Ref.	R.O.
REC350-01303-0	350-01303-0

MOTORES / ENGINES / MOTORI

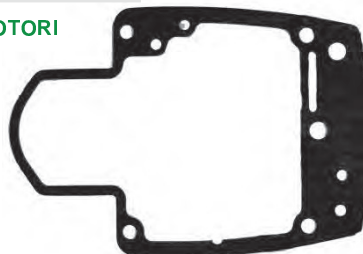
M9.9D2 / M15D2 / M18E2



Ref.	R.O.
REC350-61012-1	350-61012-1

MOTORES / ENGINES / MOTORI

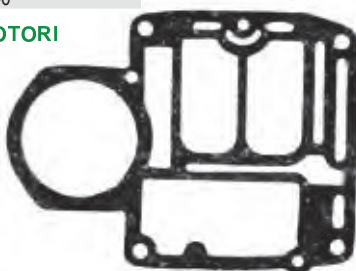
M9.9D2 / M15D2 / M18E2



Ref.	R.O.
REC346-01303-0	350-01303-0

MOTORES / ENGINES / MOTORI

M25C3  
M30A4



Ref.	R.O.
REC3B2-01303-0	3B2-01303-0

MOTORES / ENGINES / MOTORI

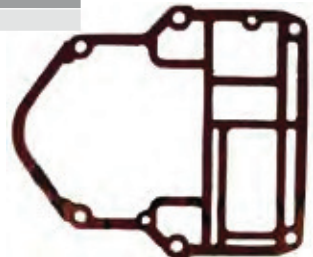
M6B / M8B / M9.8B



Ref.	R.O.
REC3C8-01303-4	3C8-01303-4

MOTORES / ENGINES / MOTORI

MD40B  
MD50B



Ref.	R.O.
REC3F3-01303-1	3F3-01303-1

MOTORES / ENGINES / MOTORI

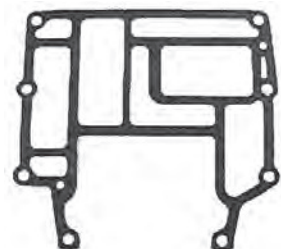
M60C / M70C



Ref.	R.O.
REC3B7-01303-0	3B7-01303-0

MOTORES / ENGINES / MOTORI

MD90A



**JUNTAS TAPA REFIRGERACIÓN  
GASKETS, EXHAUST INNER COVER  
GUARNIZIONE COPERCHIO  
REFRIGERAZIONE**

Ref.	R.O.
REC3F3-02305-1	3F3-02305-1

MOTORES / ENGINES / MOTORI

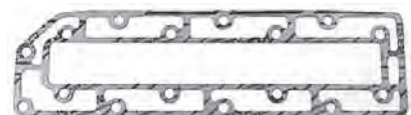
M60C / M70C



Ref.	R.O.
REC3B7-02305-1	3B7-02305-1

MOTORES / ENGINES / MOTORI

MD70B  
MD90D

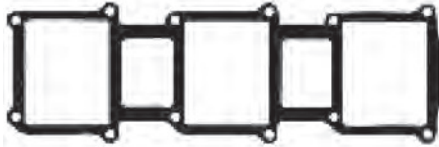


## JUNTAS ADMISIÓN INTAKE GASKET GUARNIZIONE SISTEMA ASPIRAZIONE

Ref.	R.O.
REC3T9-02104-0	3T9-02104-0

MOTORES / ENGINES / MOTORI

MD70B  
MD90B



Ref.	R.O.
REC3C8-02104-0	3C8-02104-0

MOTORES / ENGINES / MOTORI

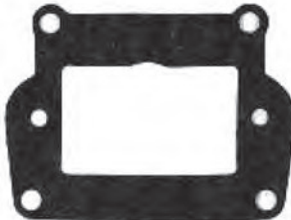
M40D2  
M50D2



Ref.	R.O.
REC3F3-02104-0	3F3-02104-0

MOTORES / ENGINES / MOTORI

M60C  
M70C



## JUNTAS DE ESCAPE EXHAUST GASKET GUARNIZIONE SCARICO

Ref.	R.O.
REC3C8-02305-0	3C8-02305-0

MOTORES / ENGINES / MOTORI

M40D2 / B  
M50D2 / B



## JUNTAS CULATÍN GASKETS, HEAD COVER GUARNIZIONE TESTATA

Ref.	R.O.
REC3C8-01024-0	3C8-01024-0

MOTORES / ENGINES / MOTORI

M40D2  
M50D2



Ref.	R.O.
REC3F3-01024-0	3F3-01024-0

MOTORES / ENGINES / MOTORI

M60C  
M70C



Ref.	R.O.
REC3T9-01024-0	3T9-01024-0

MOTORES / ENGINES / MOTORI

MD70B  
MD90B



## RETENES ACEITE OILS SEALS PARAOLIO

Ref.	R.O.
REC26-8537072	346-01215-0 18 x 28 x 6 mm

MOTORES / ENGINES / MOTORI

M25C3  
M30A4  
MFS25A-B / MFS30A-B  
MFS40A / MFS50A



Ref.	R.O.
REC26-161301	346-60111-0 18 x 28 x 8 mm

MOTORES / ENGINES / MOTORI

M25C3  
M30A4  
MFS30A - B / MFS25A - B



Ref.	R.O.
REC26-161622	346-65013-0 17 x 30 x 9 mm

MOTORES / ENGINES / MOTORI

M15D2  
M18E2  
M25C3  
M30A4  
M9.9D2  
MFS20C  
MFS18B2  
MFS15C-B2  
MFS30B-A  
MFS25A-B  
MFS20C  
MFS9.9B2-C



Ref.	R.O.
REC26-803667	350-00121-0 25 x 45 x 8 mm

MOTORES / ENGINES / MOTORI

M9.9D2  
M15D2  
M18E2



Ref.	R.O.
REC8M0065585	350-01215-5 25 x 69 x 9,5 mm

MOTORES / ENGINES / MOTORI

M9.9D2  
M15D2  
M18E2



Ref.	R.O.
REC26-16703	369-01215-0 10 x 62 x 7 mm

MOTORES / ENGINES / MOTORI

M4C / M5B / M5BS  
MFS4A-B / 5A-B-C / 6A-B-C



Ref.	R.O.
REC26-16162	369-60223-0 10 x 24 x 8 mm

MOTORES / ENGINES / MOTORI

M4C / M5B / M5BS  
MFS4A-B / 5A-B-C / 6A-B-C



# CARBURADOR CARBURETOR CARBURATORI

Ref.	R.O.
PAF8-05040000	3FS-03100-0, 3V2-03100-2

**MOTORES / ENGINES / MOTORI**  
MFS8 / MFS9.8HP  
4 Tiempos / Stroke / Tempi



## KITS CARBURADOR CARBURETOR KIT KIT CARBURATORI

Ref.	R.O.
REC84419M	345-87122-0

**MOTORES / ENGINES / MOTORI**  
M35C  
M40C  
Para 2 carburadores  
For 2 carburetors  
Per 2 carburatori



Ref.	R.O.
REC6H3-W0093-02	346-87122-0

**MOTORES / ENGINES / MOTORI**  
45A2 / 50C / 60C / 70A2 / M25C3 / M30A4



Ref.	R.O.
REC6G1-W0093-00	369-87122-1

**MOTORES / ENGINES / MOTORI**  
5B / 8B / 9.8



## BOYAS FLOATS GALLEGGIANTI

Ref.	R.O.
REC162532	3C8-03125-0

**MOTORES / ENGINES / MOTORI**

M9.9D2 / M15D2 / M18W2 / M40D2 / M50D2  
MF8 / 9.8A-A2-A3  
MFS15C / MFS20C



Ref.	R.O.
REC16S53	369-03231-0

**MOTORES / ENGINES / MOTORI**

M4B / M5B / M5BS  
M6B / M8B / M9.8B



## CABLE ACELERADOR THROTTLE CABLE CAVO ACCELERATORE

Ref.	R.O.
REC804898	3B2-63600-1

**MOTORES / ENGINES / MOTORI**

M6B / M8B / M9.8B



## MEMBRANAS BOMBA COMBUSTIBLE FUEL PUMP DIAPHRAGMS MEMBRANA POMPA BENZINA

Ref.	R.O.
REC8537312	350-04005-0

**MOTORES / ENGINES / MOTORI**

M9.9D2 / M15D2 / M18E2 / M40D2 / M50D2



**DIAFRAGMA A / DIAPHRAGM A / MEMBRANA A**

Ref.	R.O.
REC16275	369-03303-0

**MOTORES / ENGINES / MOTORI**

M4C / M5B / M5BS / M6B / M8B / M9.8B



**DIAFRAGMA B / DIAPHRAGM B / MEMBRANA B**

Ref.	R.O.
REC16325	369-03306-0

**MOTORES / ENGINES / MOTORI**

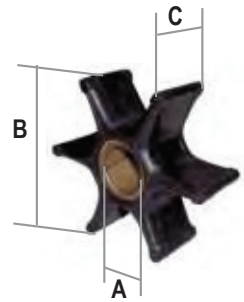
M4C / M5B / M5BS / M6B / M8B / M9.8B



# GUÍA IMPULSORES / IMPELLER GUIDE / GUIDA GIRANTE

MEDIDAS mm (A-B-C)  
Measurements mm (A-B-C)  
Misure mm (A-B-C)

Modelo Model Modello	Tiempo Strokes Tempi	R.O. OEM	Ref. CEF	Ref. RECMAR	Medidas / Measurements / Misure		
					A	B	C
2HP	2	369-65021-1	CEF500377		10,25	33,60	14,30
2.5HP	2	369-65021-1	CEF500377		10,25	33,60	14,30
2.5A/3.5A/3.5B	2	309-65021-1	CEF500396		12,00	41,00	14,00
3.5HP	2	369-65021-1	CEF500377		10,25	33,60	14,30
4/5HP	2	369-65021-1	CEF500377		10,25	33,60	14,30
MFS4/5/6HP	4	369-65021-1	CEF500377		10,25	33,60	14,30
6/8/9.8HP	2	3B2-65021-1	CEF500344	REC3B2-65021-1	12,10	40,00	18,00
MFS8/9.8 HP	4	3B2-65021-1	CEF500344	REC3B2-65021-1	12,10	40,00	18,00
9.9/15/18HP	2	334-65021-0	CEF500383		13,96	40,70	23,35
MFS9.9/15/18HP	4	334-65021-0	CEF500383		13,96	40,70	23,35
20HP	4	334-65021-0	CEF500383		13,96	40,70	23,35
25/30HP	2	345-65021-0	CEF500382	REC345-65021-0	17,12	44,10	20,25
MFS25/30HP	4	345-65021-0	CEF500382	REC345-65021-0	17,12	44,10	20,25
35HP	2	345-65021-0	CEF500382	REC345-65021-0	17,12	44,10	20,25
40/50HP	2	345-65021-1	CEF500379		17,20	50,40	20,15
60/70/90HP	2	3B7-65021-2	CEF500388	REC3B7-65021-2	20,15	67,40	35,10
115/120/140HP	2	3C7-65021-1	CEF500388		20,15	67,40	35,10



TOHATSU

## JUNTAS BOMBA COMBUSTIBLE FUEL PUMP GASKETS GUARNIZIONE POMPA BENZINA

Ref.	R.O.
REC27-8555691	3C8-04028-0

MOTORES / ENGINES / MOTORI  
M9.9D2 / M15D2 / M18E2 / M40D2 / M50D2



Ref.	R.O.
REC27-16274	369-03302-0

MOTORES / ENGINES / MOTORI  
M4C / M5B / M5BS / M6B / M8B / M9.8B



Ref.	R.O.
REC27-16326	369-03307-0

MOTORES / ENGINES / MOTORI  
M4C / M5B / M5BS / M6B / M8B / M9.8B



## TERMOSTATO THERMOSTAT TERMOSTATO

Ref.	R.O.	
REC855676002	3R3-01030-0	60°

MOTORES / ENGINES / MOTORI  
MFS8 - MFS30



## JUNTAS TERMOSTATO THERMOSTAT GASKETS GUARNIZIONE TERMOSTATO

Ref.	R.O.
REC3T9-01032-0	3T9-01032-0

MOTORES / ENGINES / MOTORI  
MD75C2  
MD70B / C2  
MD90D / C2



## COLAS LOWER UNIT PIEDI

## JUNTA BOMBA AGUA WATER PUMP GASKET GUARNIZIONE POMPE ACQUA

Ref.	R.O.
REC3F0-65029-0	3F0-65029-6

MOTORES / ENGINES / MOTORI  
M3.2B2  
MFS2.5B  
MFS3.5B  
MFS2A



## KITS JUNTAS COLA LOWER UNIT SEAL GASKET KIT GUARNIZIONE PIEDE

Ref.	R.O.	
REC3B2-87321-0	3B2-87321-0	4T

MOTORES / ENGINES / MOTORI  
MFS8A - 8A2  
MFS9.8A - 9.8A2



## PLACA BASE BOMBA AGUA PLATE WATER PUMP PIASTRA POMPA ACQUA

Ref.	R.O.
PAF8-04000007	3B2-65025-0

MOTORES / ENGINES / MOTORI  
MD9.9D2 / 15D2 / 18E2  
MFS9.9B2-C / 15C / 18B2 / 20C



RECAMBIOS  
MARINOS S.L.



Ref.	R.O.
REC16159	369-65025-0

**MOTORES / ENGINES / MOTORI**

MFS4A2-B-C  
MFS5A2-B-C  
MFS4A2-B-C



**CASQUILLO INOX.  
CARTRIDGE, INSERT  
BOCCOLA INOX**

Ref.	R.O.
REC803751	350-65011-1

**MOTORES / ENGINES / MOTORI**

M9.9D2 / M15D2 / M18E2  
MFS9.9C - B2 / 15C-B2 / 20C / 18B2



Ref.	R.O.
REC16157	369-65011-0

**MOTORES / ENGINES / MOTORI**

M4B / M5B / M5B5  
MFS4 / 5 / 6 -A2



Ref.	R.O.
PAF8-04000010	3B2-65011-0

**MOTORES / ENGINES / MOTORI**

M6 / M8 / M9.8B  
MFS8 / 9.8A - A2 -A3



**GUÍA PIEZAS COLA  
STERN DRIVE COMPONENTS APPLICATIONS  
GUIDA RICAMBI PIEDI**

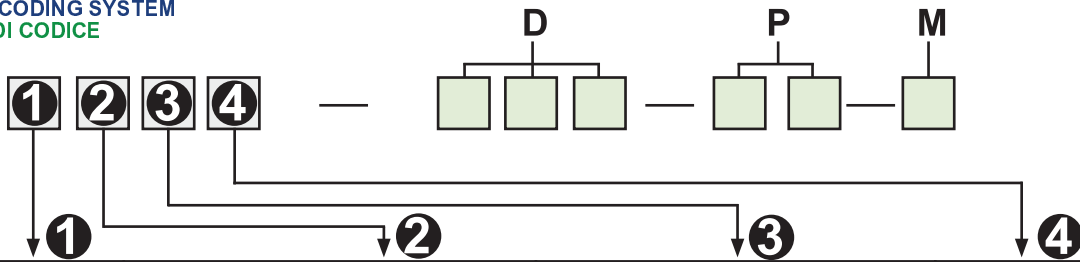
MODELO MODEL MODELLO	PIÑÓN ATAQUE GEAR PIGNONE INNESTO	PIÑÓN AVANTE GEAR FORWARD PIGNONE MARCIA AVANTI	PIÑÓN M. ATRÁS GEAR REVERSE PIGNONE MAR. INDIETRO	CLUTCH	"S" EJE TRANSMISIÓN TRANS. SHAFT ASSE TRANS.	"L" EJE TRANSMISIÓN TRANS. SHAFT ASSE TRANS.	EJE HÉLICE PROPELLER SHAFT ASSE ELICA
M2.5A-B-A2	REC43-16138	REC43-812944					
M3.5A-B-A2-B2	REC43-16138	REC43-812944					
M4C/M5B-BS	REC43-16138	REC43-812944	REC43-8129451		REC45-161351	REC8M0076368	REC44-195133
MFS4/5/6A2-B-C	REC43-16138	REC43-812944	REC43-8129451		REC45-161351	REC8M0076368	REC44-195133
MFS8/9.8B	PAF8-04000003	PAF8-04010000	PAF8-04000014				PAF8-04000301
MFS8A2-3/MFS9.8A2-3	PAF8-04000003	PAF8-04010000	PAF8-04000014	PAF8-04000303	PAF8-04020001S	PAF8-04020001L	PAF8-04000301
M9.9/15D2/M18E2	REC43-803740	REC43-803739	REC43-803741	REC43-803741	REC45-803738	REC45-8037381	REC879147T96
MFS9.9B2/15B2/18B2	REC43-803740T02	REC43-803739T03	REC43-803741T03	REC43-803741			REC879147T96

**GUÍA MANTENIMIENTO  
MAINTENANCE GUIDE  
GUIDA DI MANUTENZIONE**

Modelo Model Modello	DESCRIPCIÓN	DESCRIPTION	DESCRIZIONE	Unidades Units M*****	Ref.
MFS4 MFS5 MFS6	BUJÍA	SPARK PLUG	CANDELE	1	NGKDCPR6E
	ÁNODO	ANODE DRIVE	ANODO	1	TEN01259
	IMPULSOR	IMPELLER	GIRANTE	1	CEF500377
	FILTRO COMBUSTIBLE	FUEL FILTER	FILTRO BENZINA	1	PAF4-05000300
MFS8 MFS9.8	BUJÍA	SPARK PLUG	CANDELE	2	NGKDCPR6E
	ÁNODO BLOQUE	ANODE ENGINE	ANODO MOTORE	1	TEN01258
	IMPULSOR	IMPELLER	GIRANTE	1	CEF500344
	FILTRO COMBUSTIBLE	FUEL FILTER	FILTRO BENZINA	1	PAF4-05000300
	TERMOSTATO	THERMOSTAT	TERMOSTATO	1	REC855676002
	CORREA DISTRIBUCIÓN	TIMING BELT	CINGHIE DISTRIBUZIONE	1	PAF8-05000004
MFS9.9 MFS15 MFS18	ÁNODO COLA	ANODE DRIVE	ANODO PIEDE	1	TEN01260
	BUJÍA	SPARK PLUG	CANDELE	2	NGKDCPR6E
	ÁNODO BLOQUE	ANODE ENGINE	ANODO MOTORE	1	TEN01258
	IMPULSOR	IMPELLER	GIRANTE	1	CEF500383
	FILTRO COMBUSTIBLE	FUEL FILTER	FILTRO BENZINA	1	PAF4-05000300
	FILTRO ACEITE	OIL FILTER	FILTRO OLIO	1	REC5GH-13440-00
	TERMOSTATO	THERMOSTAT	TERMOSTATO	1	REC855676002
ÁNODO TRANSOM	TRANSOM ANODE	ANODO TRANSOM	1	TEN01250	
MFS25 MFS30	BUJÍA	SPARK PLUG	CANDELE	2	NGKDCPR6E
	ÁNODO BLOQUE	ANODE ENGINE	ANODO MOTORE	1	TEN01258
	IMPULSOR	IMPELLER	GIRANTE	1	CEF500382
	FILTRO COMBUSTIBLE	FUEL FILTER	FILTRO BENZINA	1	PAF4-05000300
	TERMOSTATO	THERMOSTAT	TERMOSTATO	1	REC855676002
	FILTRO ACEITE	OIL FILTER	FILTRO OLIO	1	REC5GH-13440-00
	ÁNODO TRANSOM	TRANSOM ANODE	ANODO TRANSOM	1	TEN01256
ÁNODO COLA	ANODE DRIVE	ANODO PIEDE	1	TEN01253	

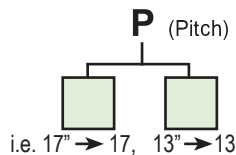
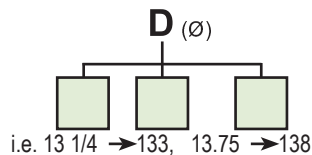
# HÉLICES ALUMINO E INOXIDABLES DE 3 Y 4 PALAS 3 & 4 BLADE ALUMINUM & STAINLESS STEEL PROPELLERS ELICHE ALLUMINIO E INOX DA 3 E 4 PALE

SISTEMA CODIGO REFERENCIAS  
PART NO. CODING SYSTEM  
SISTEMA DI CODICE



<ol style="list-style-type: none"> <li>1. Mercury, Mariner</li> <li>2. Johnson, Evinrude</li> <li>3. Yamaha</li> <li>4. Suzuki</li> <li>5. Tohatsu</li> <li>6.</li> <li>7.</li> <li>8. Volvo Penta</li> <li>9. Rubex System</li> </ol>	<ol style="list-style-type: none"> <li>1. 0,5,6,8 and 9.8 HP Grupo /Group / Gruppo</li> <li>2. B Grupo /Group / Gruppo</li> <li>3. C Grupo /Group / Gruppo</li> <li>4. D Grupo /Group / Gruppo</li> <li>5. E Grupo /Group / Gruppo</li> <li>6. F Grupo /Group / Gruppo</li> <li>7. VP (Cubo std./Std. Hub / mozzo std.)</li> <li>8. VP (Cubo largo /Long Hub / mozzo lungo)</li> </ol>	<ol style="list-style-type: none"> <li>1. Aluminio /Aluminum / Alluminio</li> <li>2. Saturn Acero inox. /S.S. / Acciaio inox.</li> <li>3. New Saturn Acero inox. /S.S. / Acciaio inox.</li> <li>4. Titan Acero inox. /S.S. / Acciaio inox.</li> <li>5. HR Titan Acero inox. /S.S. / Acciaio inox.</li> </ol>	<ol style="list-style-type: none"> <li>1. 3R Rubber Hub</li> <li>2. 3L Rubber Hub</li> <li>3. 4R Rubber Hub</li> <li>4. 4L Rubber Hub</li> </ol>
--	--	--	--

Ejemplo / Note / Esempio



## SOLAS

### AMITA 3

- Hélices de aluminio de 3 palas con núcleo de goma de gran resistencia.
- 3 blade aluminum propeller with heavy duty rubber hub.
- Eliche di alluminio a 3 pale con mozzi in gomma ad alta resistenza.



## SOLAS

### AMITA 4

- Hélices de aluminio de 4 palas con núcleo de goma de gran resistencia.
- Van muy suaves a poca velocidad y hace el barco muy manejable con la mar picada.
- 4 Blade aluminum propeller with heavy duty rubber hub.
- Smoother low speed makes the offshore boating activity much easier.
- Eliche di alluminio a 4 pale con mozzo in gomma ad alta resistenza.
- Molto morbido a bassa velocità e rende la barca molto maneggevole con mare cattivo.



## SOLAS

### NEW SATURN PROP

- Hélices de acero inoxidable de 3 palas.
- Ofrece buena aceleración y rendimiento.
- Tamaño más pequeño que ofrece un diámetro extragrande.
- Three blade stainless steel propeller.
- Offers good acceleration & all-round performance.
- Smaller pitch sizes offered in extra large diameter with increased blade area.
- Eliche di acciaio inox a 3 pale.
- Buona accelerazione.
- Piccole dimensioni che offre un più grande diametro.



## GUÍA DE HÉLICES ALUMINO E INOXIDABLES DE 3 Y 4 PALAS 3 & 4 BLADE ALUMINUM & STAINLESS STEEL PROPELLERS APPLICATION GUIDA ELICHE ALLUMINIO E INOX DA 3 E 4 PALE

HP	R.O. OEM	B	D	P	R	TIPO TYPE	ALUMINIO ALUMINIUM ALLUMINIO		INOX STAINLESS STEEL
							AMITA 3	AMITA 4	NEW SATURN
5 (2T) 4, 5, 6 (4T)		3 3	7,8 7,8	7 8	R R	Alum Alum	SOL5011-078-07 SOL5011-078-08		
8, 9'8 (2T) 8, 9'8 (4T)	3B2-64513-0 3B2-64515-0	3 3	8,5 8,5	6,5 7,5	R R	Alum Alum	SOL5011-085-07 SOL5011-085-08		
12 Estrias 12 tooth spline 12 denti	3B2-64517-0	3	8,5	8,5	R	Alum	SOL5011-085-09		
9'9, 12, 15, 18 (2T) 9'9, 15, 18, 20 (4T)	362-64105-0 362-64103-0 362-64101-0	3 3 3	9,2 9,2 9,2	6,9 7,8 8,8	R R R	Alum Alum Alum	SOL5111-093-07 SOL5111-093-08 SOL5111-093-09		
14 Estrias 14 tooth spline 14 denti	- 362-64108-0	3 3	9,2 9,2	9,1 9,8	R R	Alum Alum	SOL5111-093-09 SOL5111-093-10 SOL5111-093-11		
25, 30 (2T) 25, 30 (4T)	346-64106-5 346-64101-5	3 3	10,2 9,8	8,3 9,3	R R	Alum Alum	SOL5211-099-09 SOL5211-099-10		
10 Estrias 10 tooth spline 10 denti	346-64102-5 346-64103-5 346-64104-5	3 3 3	9,8 9,8 9,8	10,2 11,3 13,1	R R R	Alum Alum Alum	SOL5211-099-11 SOL5211-099-13	SOL5213-102-11 SOL5213-100-13	
35, 40, 50, 55 (2T)	361-64113-0 361-64114-0 348-64102-0 348-64103-0 3E3-64528-0 3E3-64536-0	3 3 3 3 3 3	12,2 12,2 12,1 11,6 11,4 11,1	7 8 9 11 12 13	R R R R R R	Alum Alum Alum Alum Alum Alum	SOL5311-122-07 SOL5311-122-08 SOL5311-121-09 SOL5311-116-11 SOL5311-114-12 SOL5311-111-13 SOL5311-111-14	SOL5313-118-09 SOL5313-111-11 SOL5313-108-12 SOL5313-105-13 SOL5313-105-14	
13 Estrias 13 tooth spline 13 denti		3 3 3 3 3	11 11 11 11 11	14 15 16 17	R R R R R	Alum Alum Alum Alum Alum	SOL5311-110-15 SOL5311-110-16 SOL5311-110-17		
60, 70, 90, 115, 120, 140 (2T)	3B7-64523-1 3B7-64527-1 3C7-64536-0	3 3 3	14 13,75 13,5	11 13 15	R R R	Alum Alum Alum	SOL3411-140-11 SOL3411-138-13 SOL3411-135-15	SOL3413-133-13 SOL3413-130-15 SOL3413-128-17	SOL3431-135-15 SOL3431-133-17
15 Estrias 15 tooth spline 15 denti	3C7-64541-0 3C7-64554-0	3 3	13,25 13	17 19	R R	Alum Alum	SOL3411-133-17 SOL3411-130-19 SOL3411-130-21	SOL3413-125-19 SOL3413-125-19 SOL3413-125-21	SOL3431-130-19 SOL3431-130-19 SOL3431-130-21

B= PALAS / Blades / Pale  
D= DIÁMETRO / Diametre / Diametro

R=ROTACIÓN / Rotation / Rotazione  
(R) Derecha / Right / DX  
(L) Izquierda / Left / SX

## GUÍA DE NÚCLEOS HUB KIT APPLICATION CHAST GUIDA MOZZI INTERCambiabili

SOLAS Altas prestaciones / núcleo de goma  
Intercambiable con sistemas flo-torq & Vortex System.  
Disponibile en acero inox y aluminio.

SOLAS High performance / Ruber Hub  
Interchangeable with flo-torq & Vortex System.  
Available in stainless Steel & Aluminium Propeller.

SOLAS Alte prestazioni / mozzo intercambiabile di gomma  
con sistema flo-torq & Vortex System.  
Disponibile in acciaio inox e alluminio.



# RUBEX

MODELO MODEL MODELLO	REF. KIT	MODELO HÉLICE PROPELLER TYPE MODELLO ELICA
35HP (35B only) Thru 1984; 40HP (1984+), 50HP (All except 50C) (1992+) 13 Estrias / tooth spline / denti	RBX-116	C
50HP (50C only) (1987-91); 55HP (1981-88); 60A (1986+) 70A/70B (1981+) 13 Estrias / tooth spline / denti	RBX-112	C
90-140HP, (1987+) 13 Estrias / tooth spline / denti	RBX-109	D

## GUÍA HÉLICES ALUMINIO PROPELLERS ALUMINUM CHART GUIDA ELICHE ALLUMINIO

### Modelo / Model / Modello **C** 30-75 H.P. 3 PALAS / 3 BLADE / 3 PALE

B	D	P	R	Ref.
3	11,4	12	R	SOL9311-114-12
3	11,1	13	R	SOL9311-111-13

### Modelo / Model / Modello **D** 40-14 H.P. 3 PALAS / 3 BLADE / 3 PALE

B	D	P	R	Ref.
3	14	9	R	SOL9411-140-09
3	14	11	R	SOL9411-140-11
3	13,75	13	R	SOL9411-138-12
3	13,5	15	R	SOL9411-135-15
3	13,25	17	R	SOL9411-133-17
3	13,2	19	R	SOL9511-132-19
3	13,2	21	R	SOL9511-132-21

### Modelo / Model / Modello **E** 135-350 H.P. 3 PALAS / 3 BLADE / 3 PALE

B	D	P	R	Ref.
3	15,5	11	R	SOL9511-155-11
3	16	13	R	SOL9511-160-13
3	15,3	13	R	SOL9511-153-13
3	15	15	R	SOL9511-150-15
3	15	15	L	SOL9512-150-15
3	14,8	17	R	SOL9511-148-17
3	14,8	17	L	SOL9512-148-17
3	14,5	19	R	SOL9511-145-19
3	14,5	19	L	SOL9512-145-19
3	14,3	21	R	SOL9511-143-21
3	14,3	21	L	SOL9512-143-21

# RUBEX



Hélice de aluminio con núcleo intercambiable (no incluido).  
Aluminium interchangeable hub propellers (not included).  
Eliche in alluminio con mozzo intercambiabile (non incluso).

## GUÍA HÉLICES INOX. STAINLESS STEEL PROPELLERS APLICATION CHART GUIDA ELICHE INOX

### Modelo / Model / Modello **D** 40-14 H.P. 3 PALAS / 3 BLADE / 3 PALE

B	D	P	R	Ref.
3	13 3/4	13	R	SOL9431-138-13
3	13 3/4	13	L	SOL9432-138-13
3	13 1/2	15	R	SOL9431-135-15
3	13 1/2	15	L	SOL9432-135-15
3	13 1/4	17	R	SOL9431-133-17
3	13 1/4	17	L	SOL9432-133-17
3	13	19	R	SOL9431-130-19
3	13	19	L	SOL9432-130-19
3	13	21	R	SOL9431-130-21

### Modelo / Model / Modello **E** 90-140 H.P. 3 PALAS / 3 BLADE / 3 PALE

B	D	P	R	Ref.
3	14 1/2	15	R	SOL9531-145-15
3	14 1/2	15	L	SOL9532-145-15
3	14 1/4	17	R	SOL9531-143-17
3	14 1/4	17	L	SOL9532-143-17
3	14	19	R	SOL9531-140-19
3	14	19	L	SOL9532-140-19
3	14	21	R	SOL9531-140-21
3	14	21	L	SOL9532-140-21
3	14	23	R	SOL9531-140-23
3	14	23	L	SOL9532-140-23

### Modelo / Model / Modello **E** 135-350 H.P. 3 PALAS / 3 BLADE / 3 PALE

B	D	P	R	Ref.
3	15 3/4	15	R	SOL9571-158-15
3	15 3/4	15	L	SOL9572-158-15
3	15 1/2	17	R	SOL9571-155-17
3	15 1/2	17	L	SOL9572-155-17
3	15 1/4	19	R	SOL9571-153-19
3	15 1/4	19	L	SOL9572-153-19
3	15	21	R	SOL9571-150-21
3	15	21	L	SOL9572-150-21
3	14 3/4	23	R	SOL9571-148-23
3	14 3/4	23	L	SOL9572-148-23

# RUBEX



Hélice de acero inox. con núcleo intercambiable (no incluido).  
Stainless steel interchangeable hub propellers (not included).  
Eliche di acciaio inox con mozzo intercambiabile (non incluso).